

Features

- 1600UT System™1 is a high thermal performance, outside glazed, captured curtain wall system
- Innovative design delivers high thermal performance while leveraging 1600 Wall System architecture
- Multiple thermal performance levels resulting from a combination of:
 - 1" (25.4) Double or 1-3/4" (44.5) Triple glazed insulating glass units
 - Aluminum or Fiberglass pressure plates
- Thermal barrier design ensures high thermal performance without being susceptible to thermal fatigue
- Offers integrated entrance framing systems
- Corners and splays available
- Comprehensively tested to latest high performance air, water, structural and thermal standards
- Glass chairs support insulating glass units enabling larger expanses of glass
- Pressure equalized system tested with vapor barrier
- Two color option
- Permanodic™ anodized finishes in seven choices
- Painted finishes in standard and custom choices

Optional Features

- Steel reinforcing
- Rain screen and backpans
- Deep profile covers and bull nose covers
- Deep and heavy-weight mullions
- Integrates with standard Kawneer windows and GLASSvent™ Windows for curtain wall
- Profit\$Maker™ plus die sets available

Product Applications

- Ideal for low to mid-rise applications where high thermal performance is desired
- High span applications

For specific product applications,
Consult your Kawneer representative.

Laws and building and safety codes governing the design and use of glazed entrance, window, and curtain wall products vary widely. Kawneer does not control the selection of product configurations, operating hardware, or glazing materials, and assumes no responsibility therefor.

Kawneer reserves the right to change configuration without prior notice when deemed necessary for product improvement.
© Kawneer Company, Inc., 2013

Architects - Most extrusion and window types illustrated in this catalog are standard products for Kawneer. These concepts have been expanded and modified to afford you design freedom. Some miscellaneous details are non-standard and are intended to demonstrate how the system can be modified to expand design flexibility. Please contact your Kawneer representative for further assistance.

PICTORIAL VIEW 4

1" INFILL DETAILS..... 5

ENTRANCE DETAILS 6-8

CORNERS 9

SPLAYED MULLION OPTIONS 10

WINDOWS 11

1-3/4" INFILL DETAILS 12

ENTRANCE DETAILS 13-15

CORNERS 16

WINDOWS 17

BACKPAN DETAILS 18,19

MISCELLANEOUS FRAMING..... 20

ANCHORING 21,22

WIND LOAD CHARTS 23-31

DEADLOAD CHARTS 32-37

THERMAL CHARTS 38-52

LAWS AND BUILDING AND SAFETY CODES GOVERNING THE DESIGN AND USE OF GLAZED ENTRANCE, WINDOW, AND CURTAIN WALL PRODUCTS VARY WIDELY. KAWNEER DOES NOT CONTROL THE SELECTION OF PRODUCT CONFIGURATIONS, OPERATING HARDWARE, OR GLAZING MATERIALS, AND ASSUMES NO RESPONSIBILITY THEREFOR.

Metric (SI) conversion figures are included throughout these details for reference. Numbers in parentheses () are millimeters unless otherwise noted.

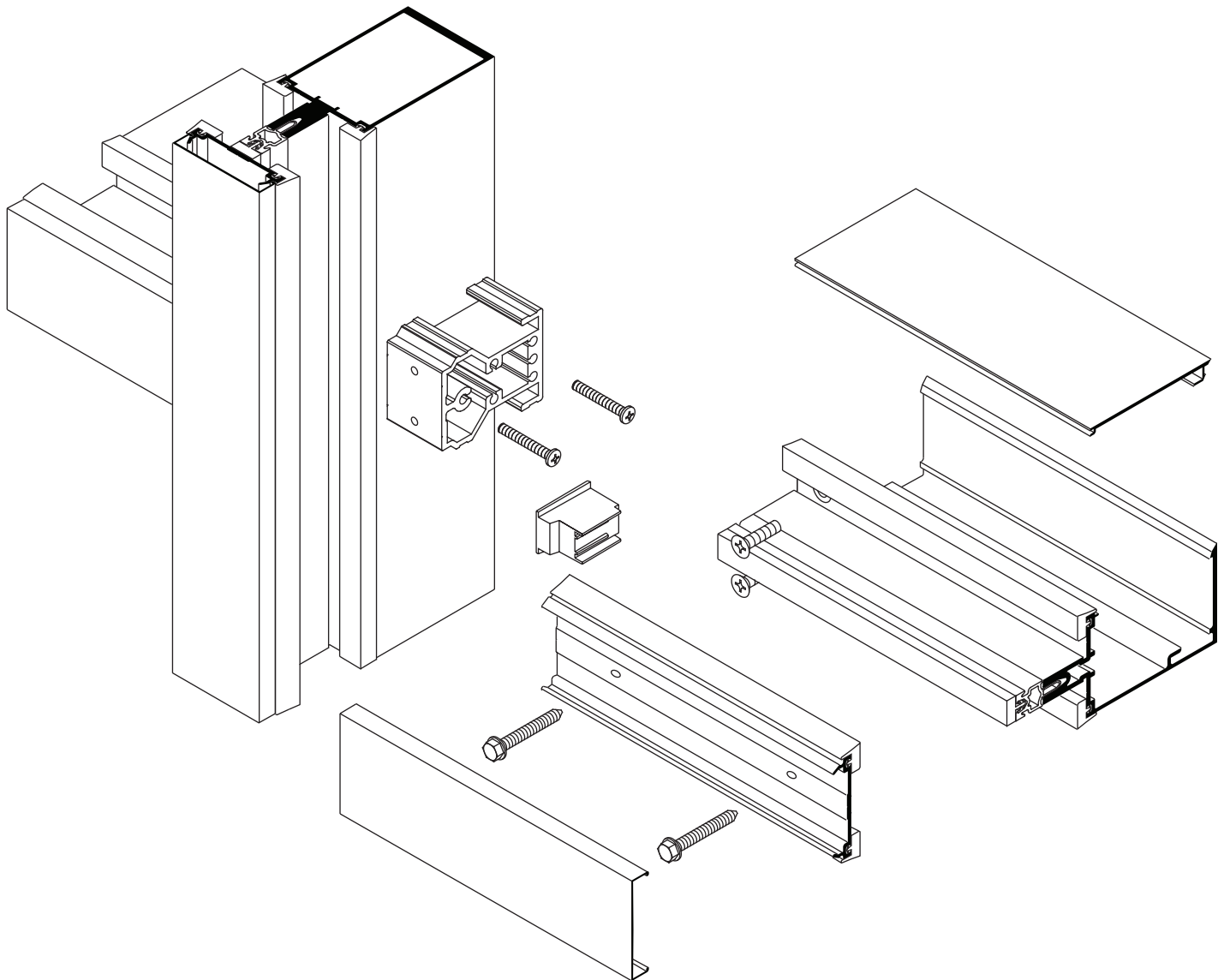
The following metric (SI) units are found in these details:

- m – meter
- cm – centimeter
- mm – millimeter
- s – second
- Pa – pascal
- MPa – megapascal

Kawneer reserves the right to change configurations without prior notice when deemed necessary for product improvement.

Laws and building and safety codes governing the design and use of glazed entrance, window, and curtain wall products vary widely. Kawneer does not control the selection of product configurations, operating hardware, or glazing materials, and assumes no responsibility therefor.

Kawneer reserves the right to change configuration without prior notice when deemed necessary for product improvement.
© Kawneer Company, Inc., 2013

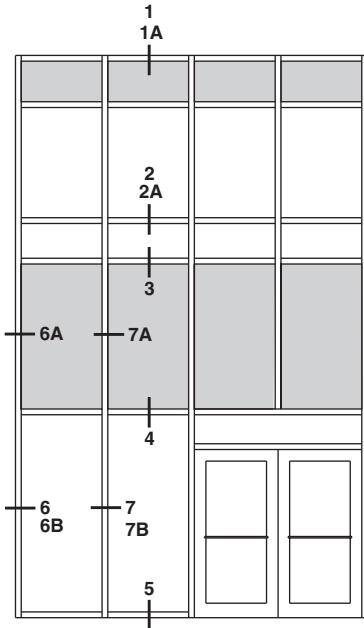


Laws and building and safety codes governing the design and use of glazed entrance, window, and curtain wall products vary widely. Kawneer does not control the selection of product configurations, operating hardware, or glazing materials, and assumes no responsibility therefor.

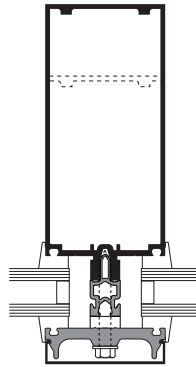
Kawneer reserves the right to change configuration without prior notice when deemed necessary for product improvement.

© Kawneer Company, Inc., 2013

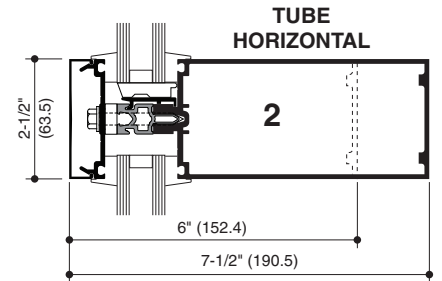
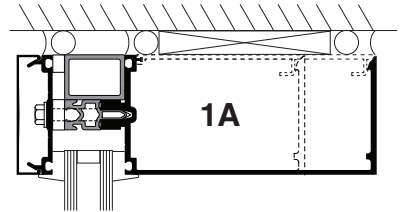
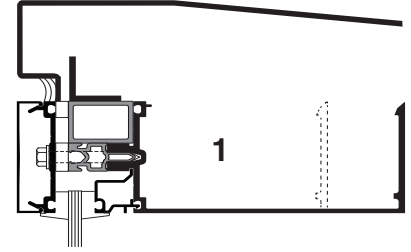
SCALE 3" = 1'-0"



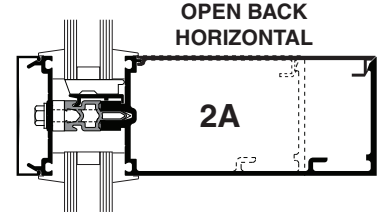
ELEVATION IS NUMBER KEYED TO DETAILS



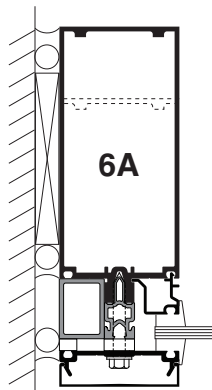
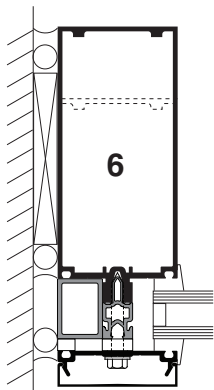
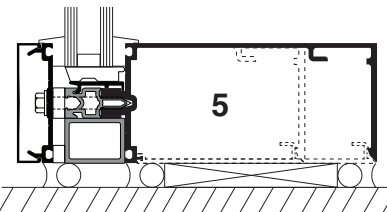
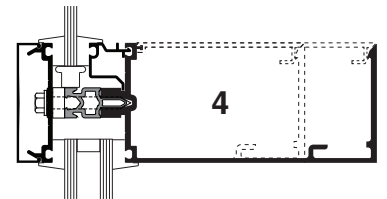
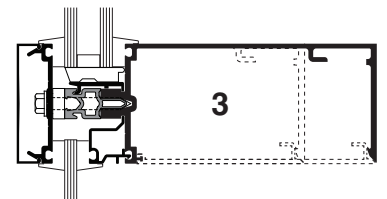
OPTIONAL FIBERGLASS PRESSURE PLATE



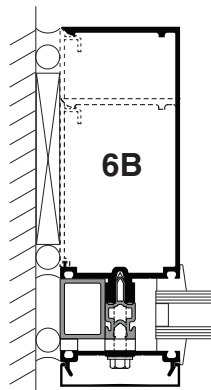
TUBE HORIZONTAL



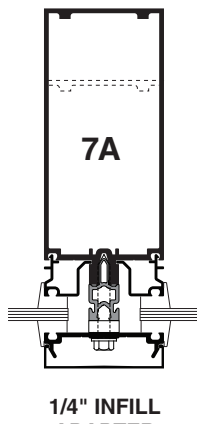
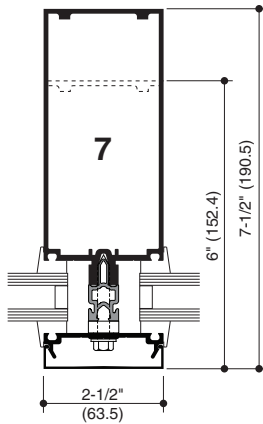
OPEN BACK HORIZONTAL



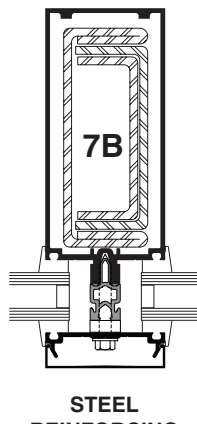
1/4" INFILL ADAPTER



OPEN BACK JAMB



1/4" INFILL ADAPTER



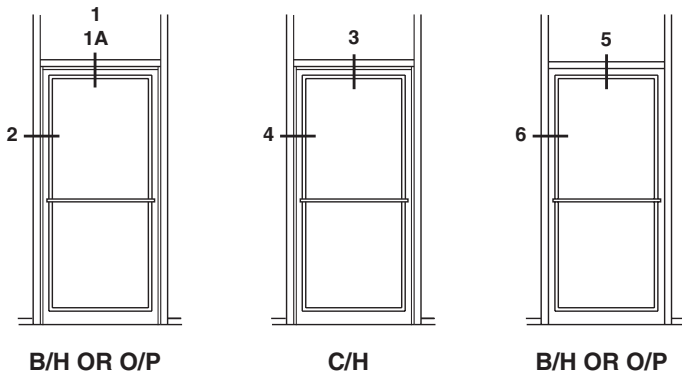
STEEL REINFORCING AS REQUIRED

Laws and building and safety codes governing the design and use of glazed entrance, window, and curtain wall products vary widely. Kawneer does not control the selection of product configurations, operating hardware, or glazing materials, and assumes no responsibility therefor.

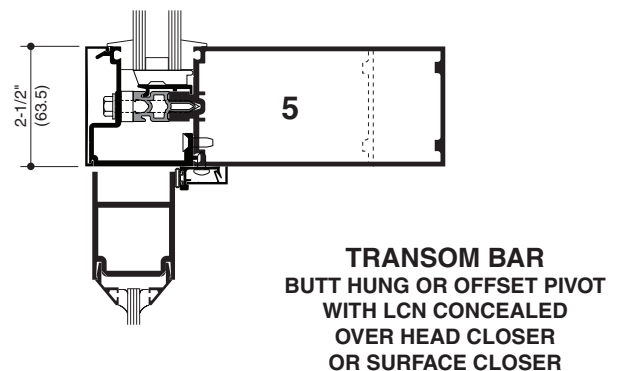
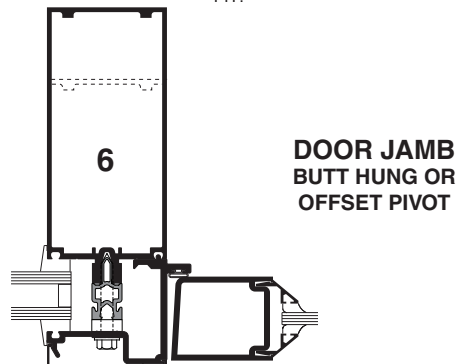
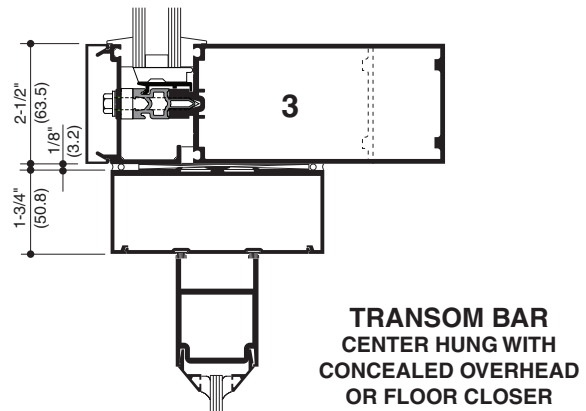
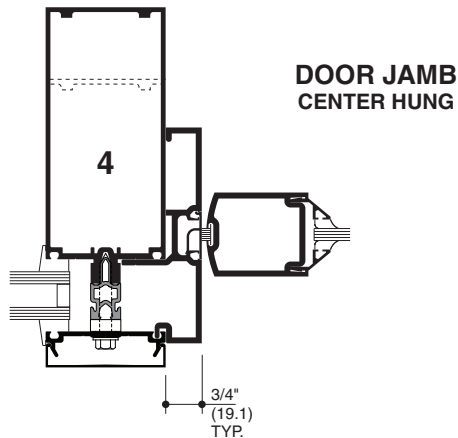
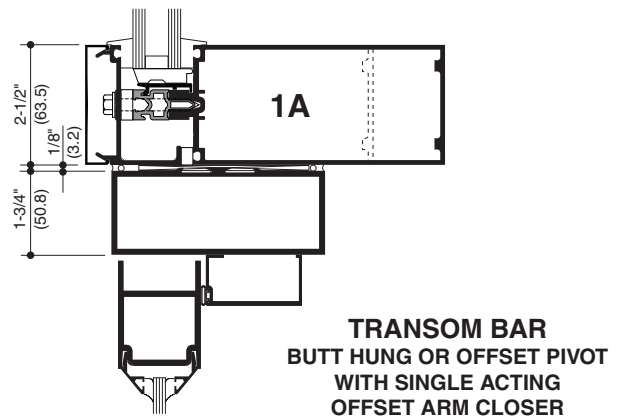
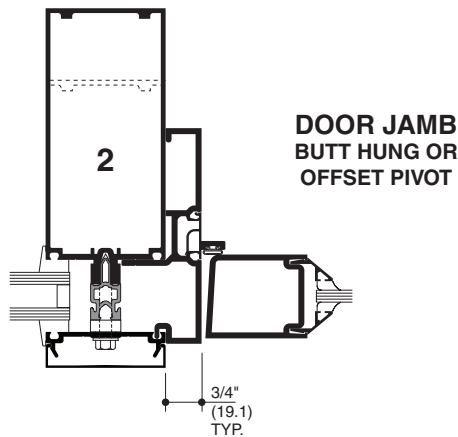
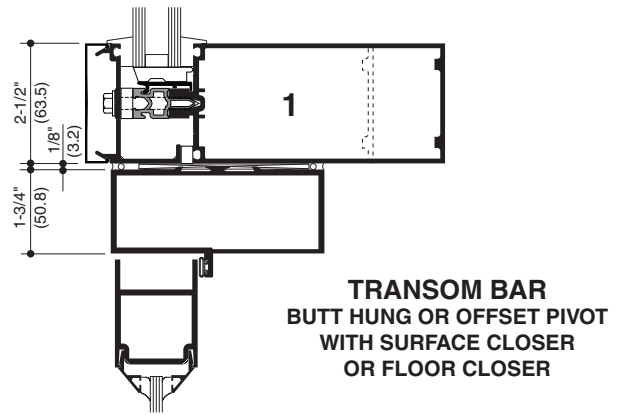
Kawneer reserves the right to change configuration without prior notice when deemed necessary for product improvement.

© Kawneer Company, Inc., 2013

SCALE 3" = 1'-0"



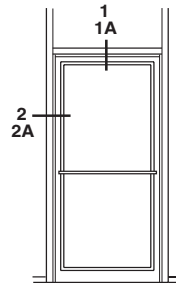
ELEVATION IS NUMBER KEYED TO DETAILS



Laws and building and safety codes governing the design and use of glazed entrance, window, and curtain wall products vary widely. Kawneer does not control the selection of product configurations, operating hardware, or glazing materials, and assumes no responsibility therefor.

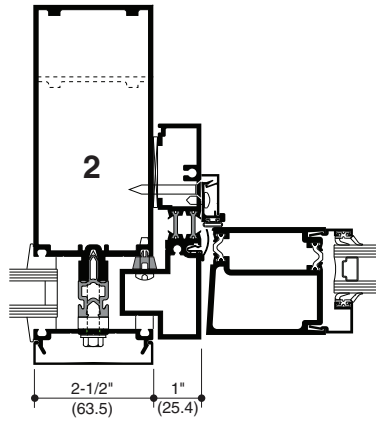
Kawneer reserves the right to change configuration without prior notice when deemed necessary for product improvement.
© Kawneer Company, Inc., 2013

SCALE 3" = 1'-0"

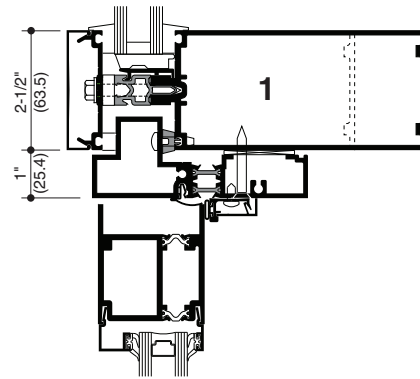


B/H OR O/P

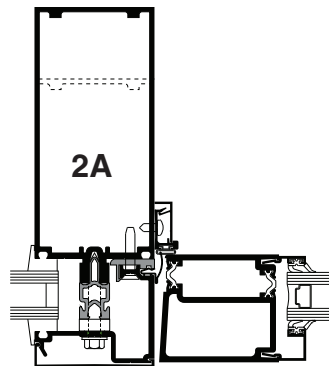
ELEVATION IS NUMBER KEYED TO DETAILS



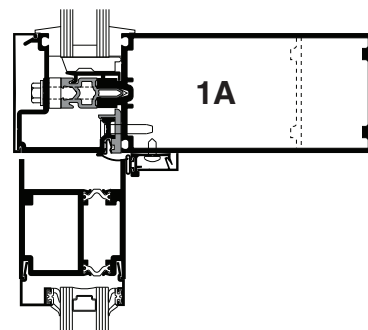
**DOOR JAMB
BUTT HUNG OR
OFFSET PIVOT**



**TRANSOM BAR
BUTT HUNG OR
OFFSET PIVOT WITH
SURFACE CLOSER
OR FLOOR CLOSER**



**DOOR JAMB
BUTT HUNG OR
OFFSET PIVOT**

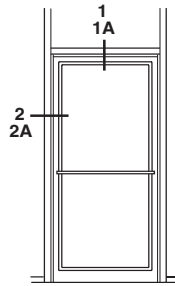


**TRANSOM BAR
BUTT HUNG OR
OFFSET PIVOT WITH
SURFACE CLOSER
OR FLOOR CLOSER**

Laws and building and safety codes governing the design and use of glazed entrance, window, and curtain wall products vary widely. Kawneer does not control the selection of product configurations, operating hardware, or glazing materials, and assumes no responsibility therefor.

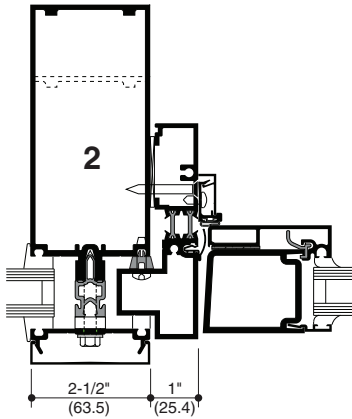
Kawneer reserves the right to change configuration without prior notice when deemed necessary for product improvement.
© Kawneer Company, Inc., 2013

SCALE 3" = 1'-0"

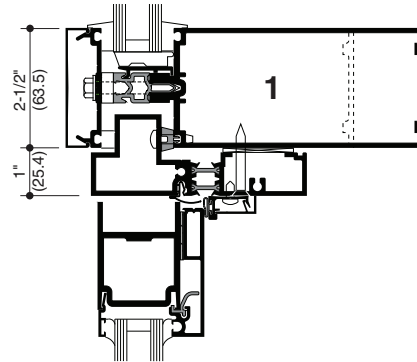


B/H OR O/P

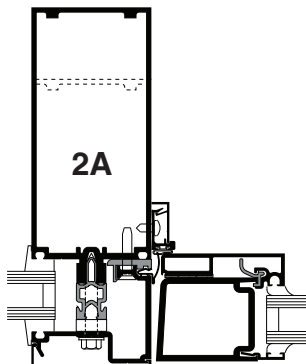
ELEVATION IS NUMBER KEYED TO DETAILS



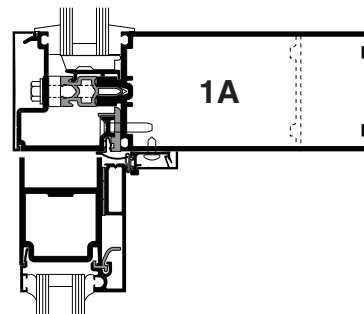
DOOR JAMB
BUTT HUNG OR
OFFSET PIVOT



TRANSOM BAR
BUTT HUNG OR
OFFSET PIVOT WITH
SURFACE CLOSER
OR FLOOR CLOSER



DOOR JAMB
BUTT HUNG OR
OFFSET PIVOT



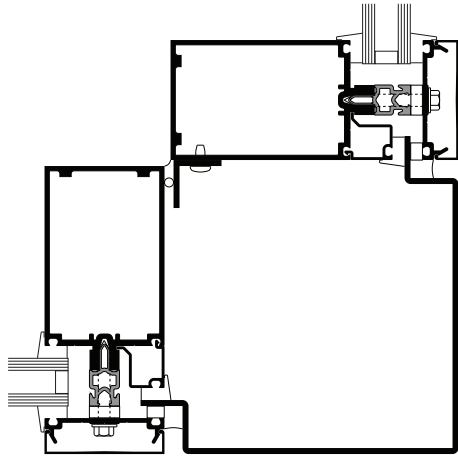
TRANSOM BAR
BUTT HUNG OR
OFFSET PIVOT WITH
SURFACE CLOSER
OR FLOOR CLOSER

Laws and building and safety codes governing the design and use of glazed entrance, window, and curtain wall products vary widely. Kawneer does not control the selection of product configurations, operating hardware, or glazing materials, and assumes no responsibility therefor.

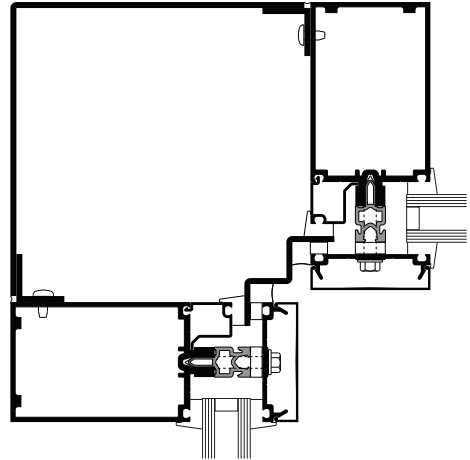
Kawneer reserves the right to change configuration without prior notice when deemed necessary for product improvement.

© Kawneer Company, Inc., 2013

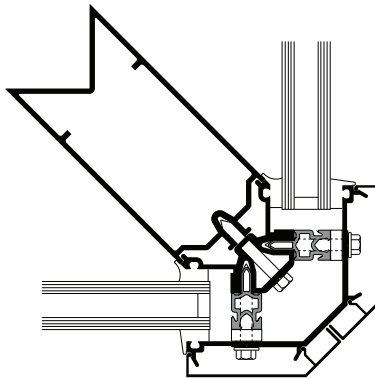
SCALE 3" = 1'-0"



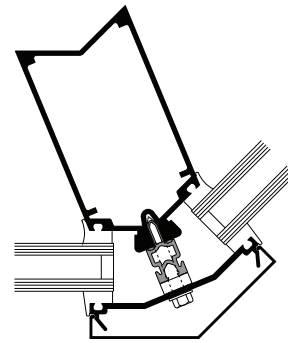
90° OUTSIDE CORNER



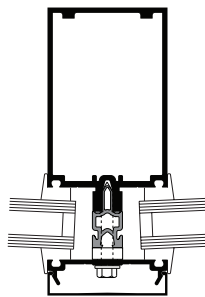
90° INSIDE CORNER



90° OUTSIDE CORNER

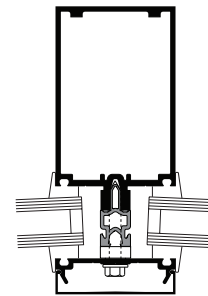


135° OUTSIDE CORNER



0° TO 5°

OUTSIDE SPLAYED MULLIONS



0° TO 5°

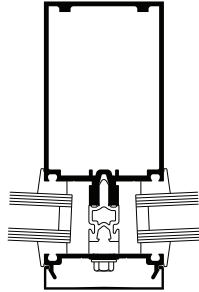
INSIDE SPLAYED MULLIONS

OTHER SPLAY OPTIONS AVAILABLE

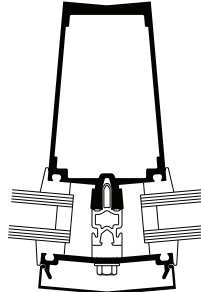
Laws and building and safety codes governing the design and use of glazed entrance, window, and curtain wall products vary widely. Kawneer does not control the selection of product configurations, operating hardware, or glazing materials, and assumes no responsibility therefor.

Kawneer reserves the right to change configuration without prior notice when deemed necessary for product improvement.
© Kawneer Company, Inc., 2013

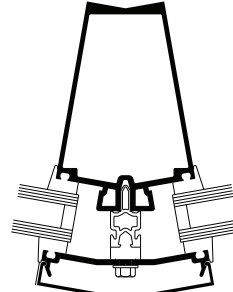
SCALE 3" = 1'-0"



0° TO 5°

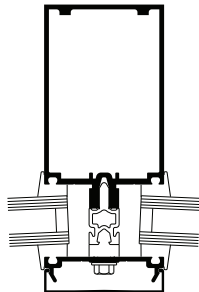


5° TO 15°

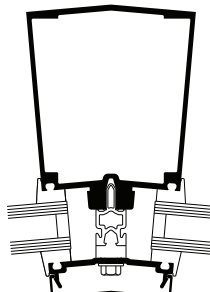


15° TO 25°

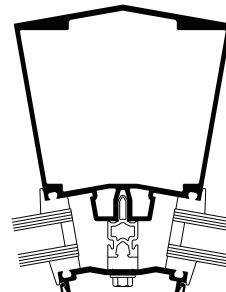
OUTSIDE SPLAYED MULLIONS



0° TO 5°



5° TO 15°



15° TO 25°

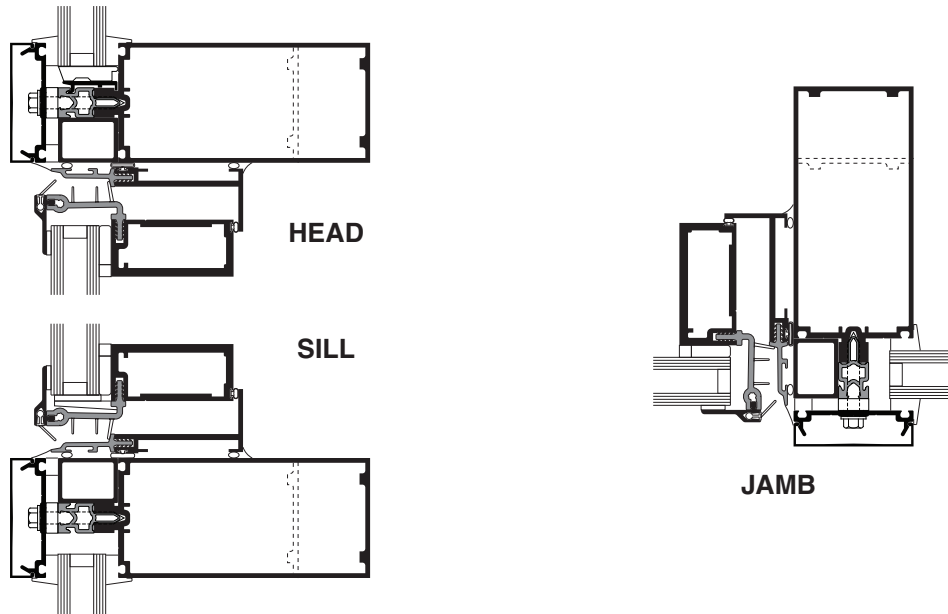
INSIDE SPLAYED MULLIONS

Laws and building and safety codes governing the design and use of glazed entrance, window, and curtain wall products vary widely. Kawneer does not control the selection of product configurations, operating hardware, or glazing materials, and assumes no responsibility therefor.

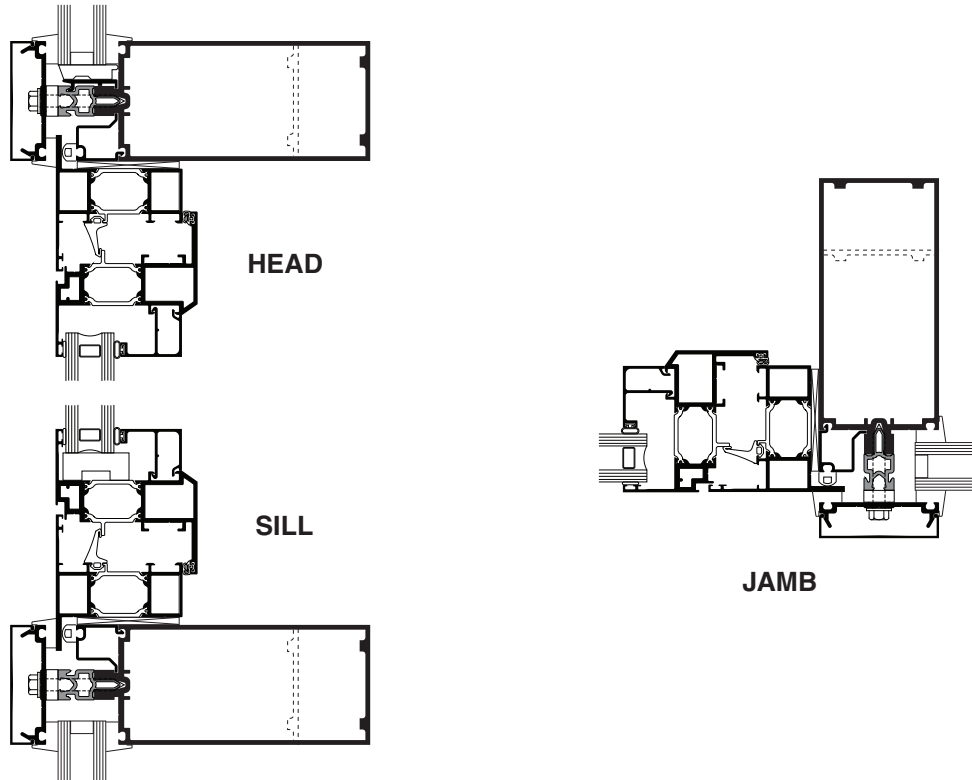
Kawneer reserves the right to change configuration without prior notice when deemed necessary for product improvement.
© Kawneer Company, Inc., 2013

SCALE 3" = 1'-0"

GLASSvent™ UT Windows



AA™900 Thermal Windows

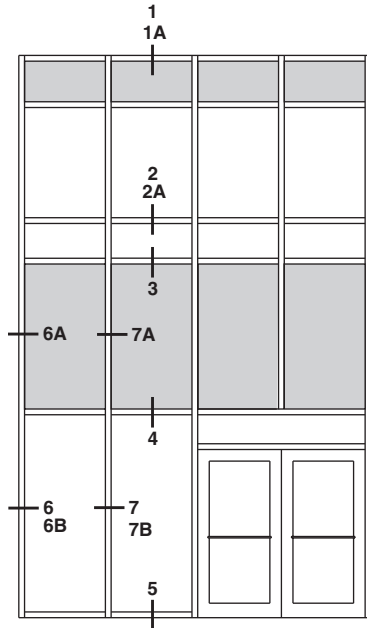


NOTE: AA™6400 vent can be accommodated.
Contact your Kawneer representative for other options.

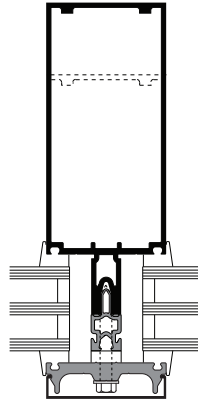
Laws and building and safety codes governing the design and use of glazed entrance, window, and curtain wall products vary widely. Kawneer does not control the selection of product configurations, operating hardware, or glazing materials, and assumes no responsibility therefor.

Kawneer reserves the right to change configuration without prior notice when deemed necessary for product improvement.
© Kawneer Company, Inc., 2013

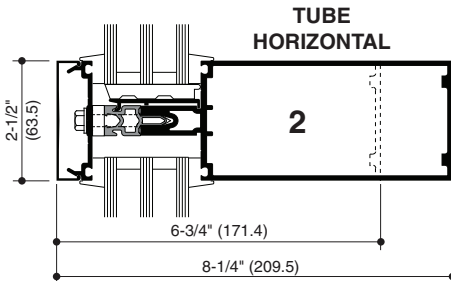
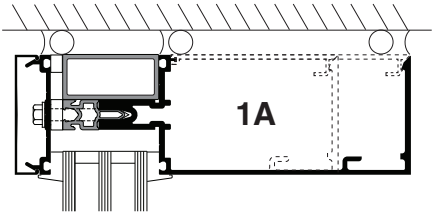
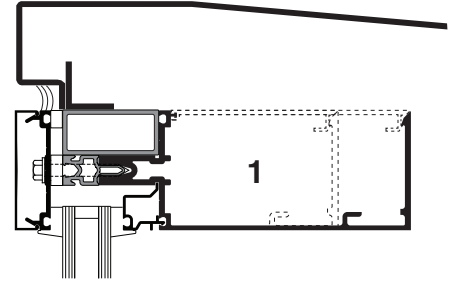
SCALE 3" = 1'-0"



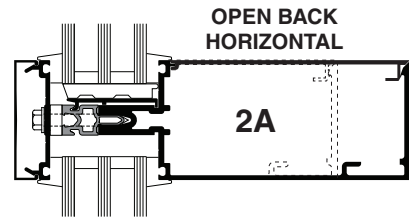
ELEVATION IS NUMBER KEYED TO DETAILS



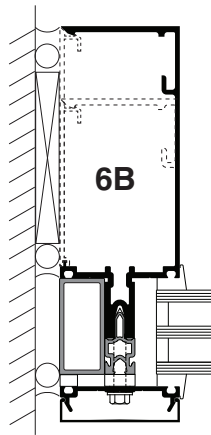
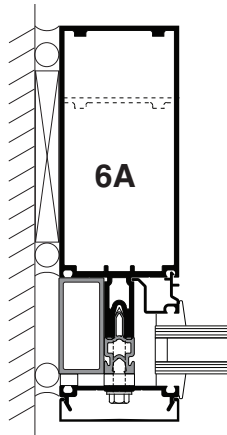
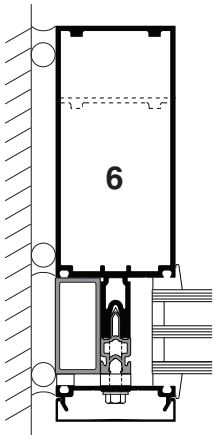
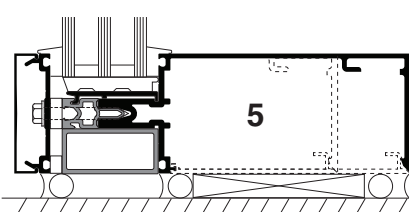
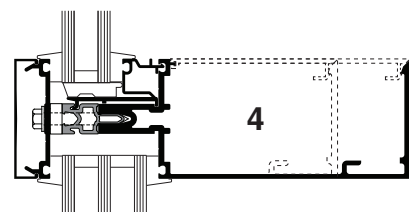
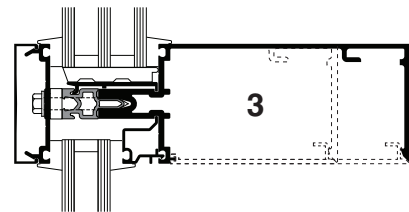
OPTIONAL FIBERGLASS PRESSURE PLATE



TUBE HORIZONTAL

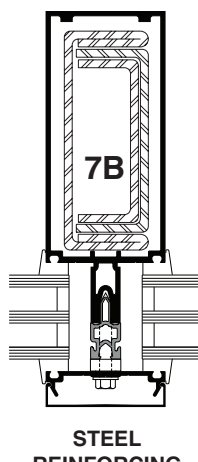
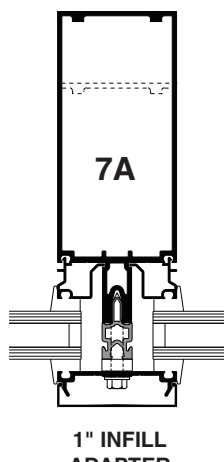
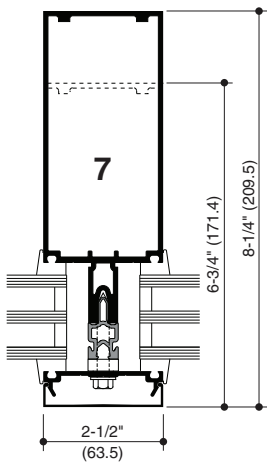


OPEN BACK HORIZONTAL



1" INFILL ADAPTER

OPEN BACK JAMB



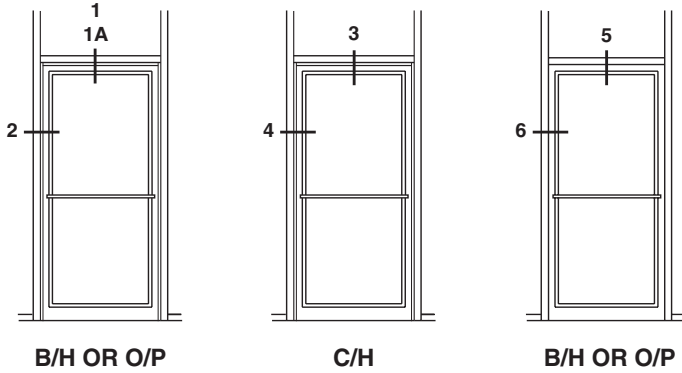
1" INFILL ADAPTER

STEEL REINFORCING AS REQUIRED

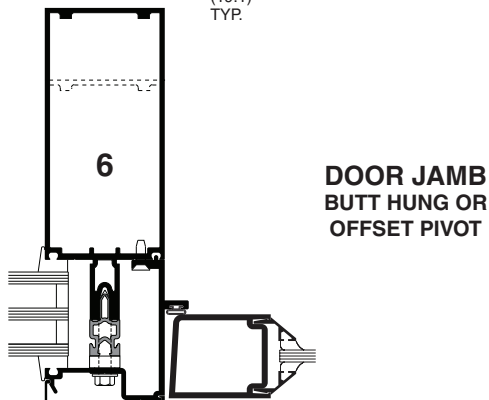
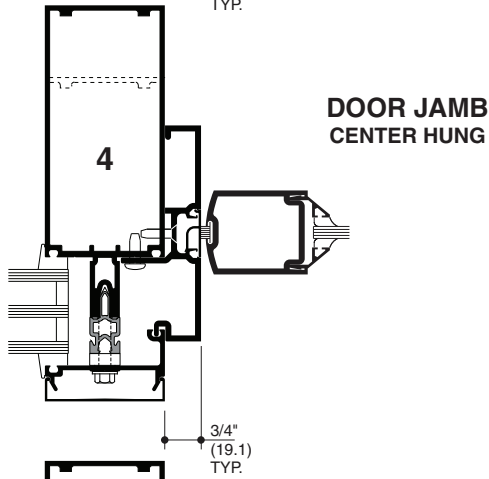
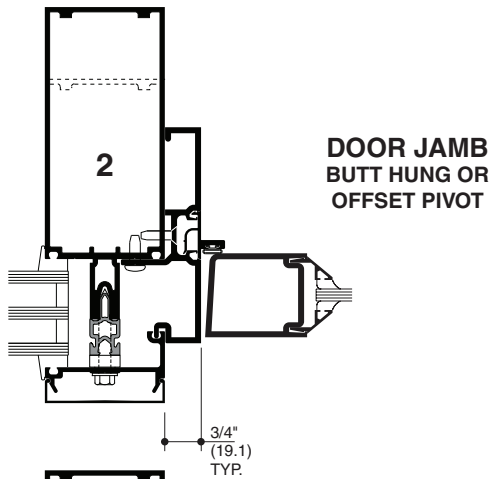
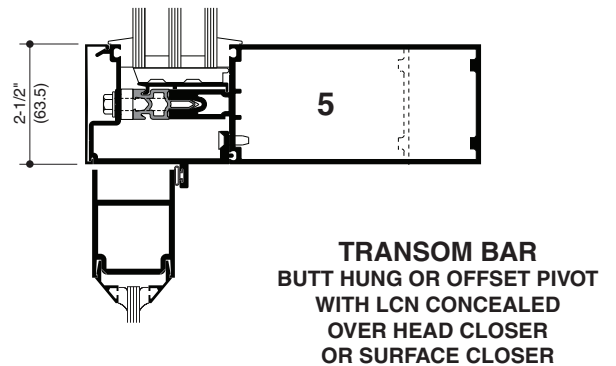
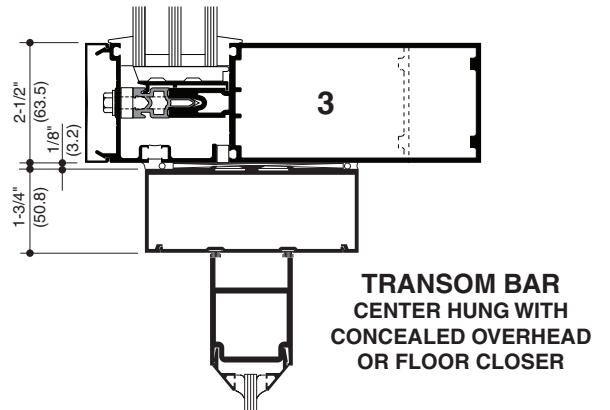
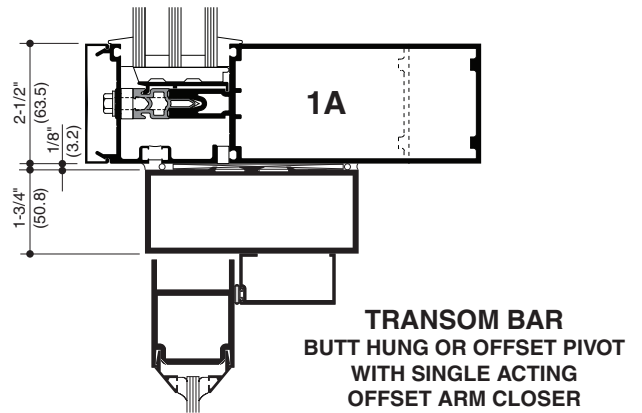
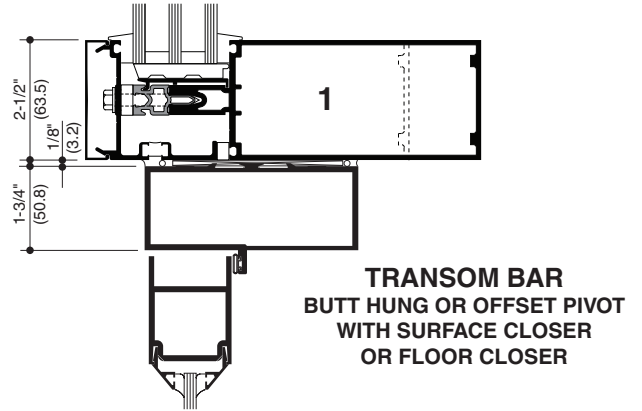
Laws and building and safety codes governing the design and use of glazed entrance, window, and curtain wall products vary widely. Kawneer does not control the selection of product configurations, operating hardware, or glazing materials, and assumes no responsibility therefor.

Kawneer reserves the right to change configuration without prior notice when deemed necessary for product improvement.
© Kawneer Company, Inc., 2013

SCALE 3" = 1'-0"



ELEVATION IS NUMBER KEYED TO DETAILS

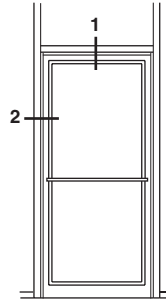


Laws and building and safety codes governing the design and use of glazed entrance, window, and curtain wall products vary widely. Kawneer does not control the selection of product configurations, operating hardware, or glazing materials, and assumes no responsibility therefor.

Kawneer reserves the right to change configuration without prior notice when deemed necessary for product improvement.

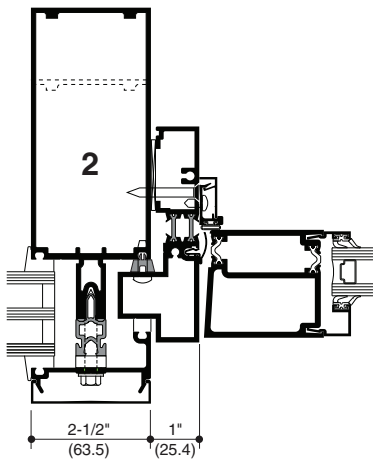
© Kawneer Company, Inc., 2013

SCALE 3" = 1'-0"

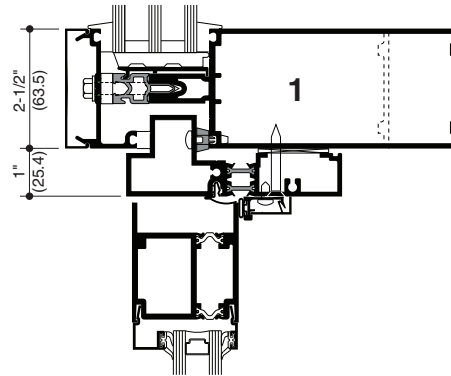


B/H OR O/P

ELEVATION IS NUMBER KEYED TO DETAILS



DOOR JAMB
BUTT HUNG OR
OFFSET PIVOT

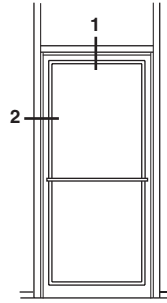


TRANSOM BAR
BUTT HUNG OR
OFFSET PIVOT WITH
SURFACE CLOSER
OR FLOOR CLOSER

Laws and building and safety codes governing the design and use of glazed entrance, window, and curtain wall products vary widely. Kawneer does not control the selection of product configurations, operating hardware, or glazing materials, and assumes no responsibility therefor.

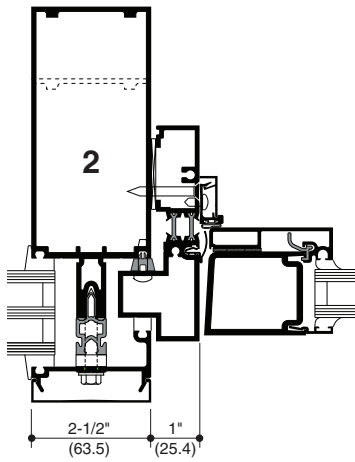
Kawneer reserves the right to change configuration without prior notice when deemed necessary for product improvement.
© Kawneer Company, Inc., 2013

SCALE 3" = 1'-0"

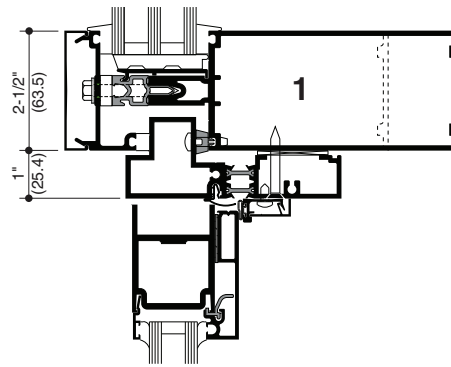


B/H OR O/P

ELEVATION IS NUMBER KEYED TO DETAILS



**DOOR JAMB
BUTT HUNG OR
OFFSET PIVOT**

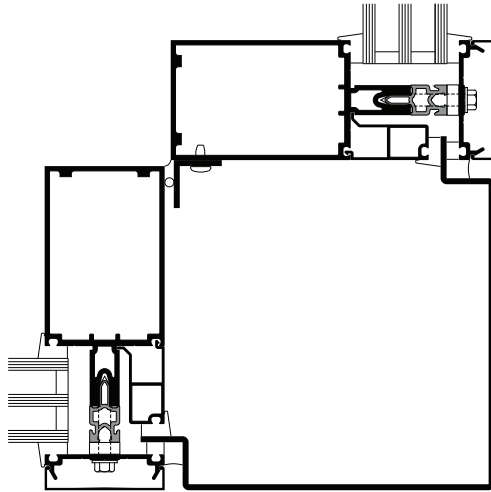


**TRANSOM BAR
BUTT HUNG OR
OFFSET PIVOT WITH
SURFACE CLOSER
OR FLOOR CLOSER**

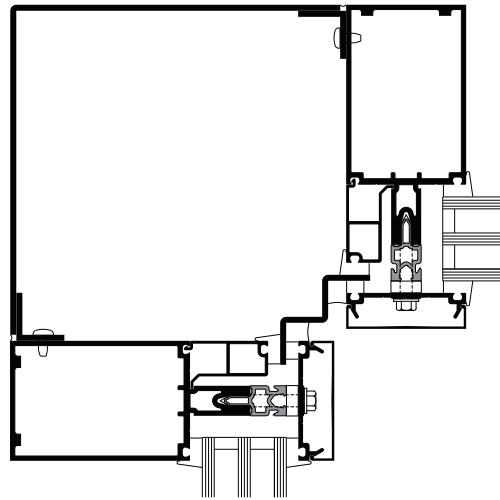
Laws and building and safety codes governing the design and use of glazed entrance, window, and curtain wall products vary widely. Kawneer does not control the selection of product configurations, operating hardware, or glazing materials, and assumes no responsibility therefor.

Kawneer reserves the right to change configuration without prior notice when deemed necessary for product improvement.
© Kawneer Company, Inc., 2013

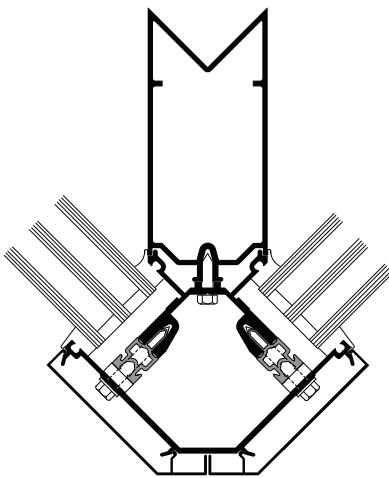
SCALE 3" = 1'-0"



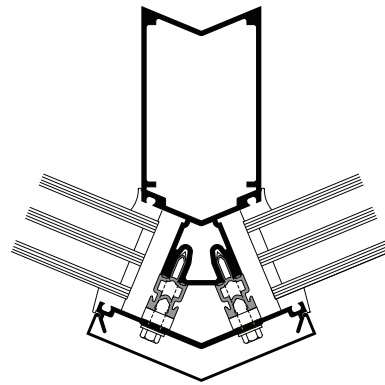
90° OUTSIDE CORNER



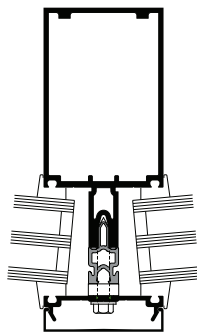
90° INSIDE CORNER



90° OUTSIDE CORNER

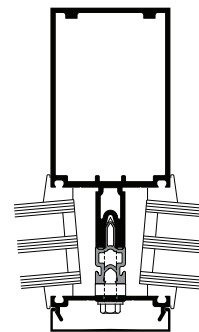


135° OUTSIDE CORNER



0° TO 5°

OUTSIDE SPLAYED MULLIONS



0° TO 5°

INSIDE SPLAYED MULLIONS

OTHER SPLAY OPTIONS AVAILABLE

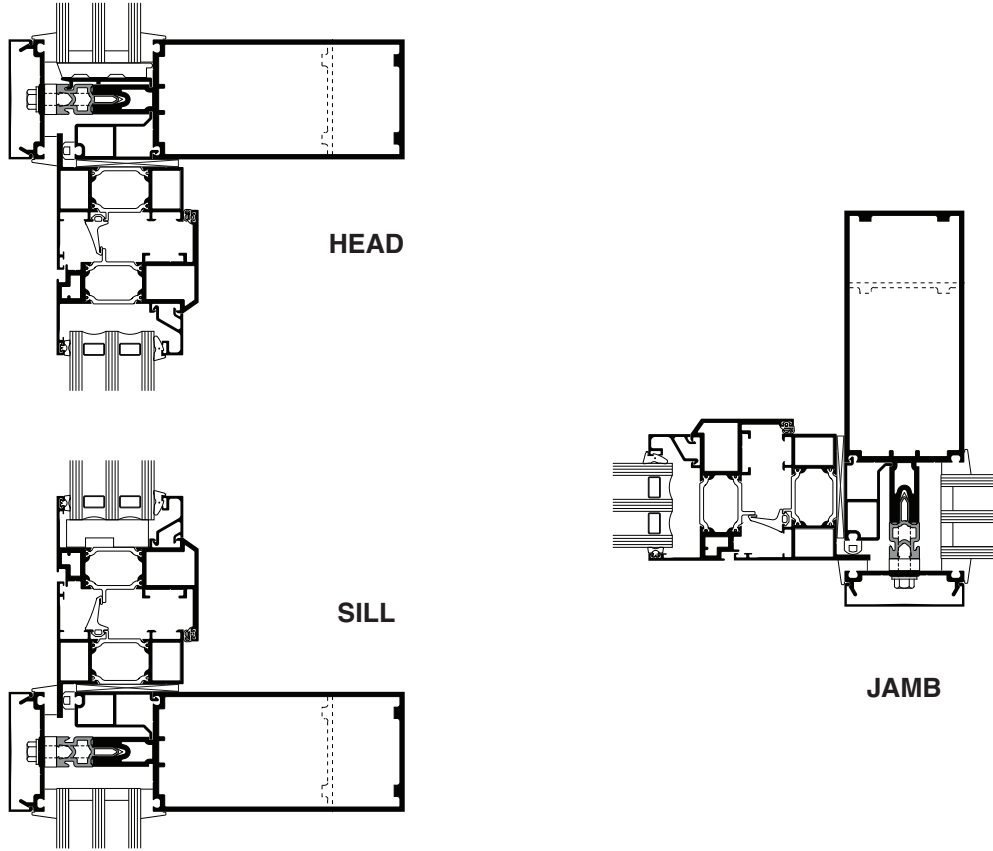
Laws and building and safety codes governing the design and use of glazed entrance, window, and curtain wall products vary widely. Kawneer does not control the selection of product configurations, operating hardware, or glazing materials, and assumes no responsibility therefor.

Kawneer reserves the right to change configuration without prior notice when deemed necessary for product improvement.

© Kawneer Company, Inc., 2013

SCALE 3" = 1'-0"

AA™900 Thermal Windows

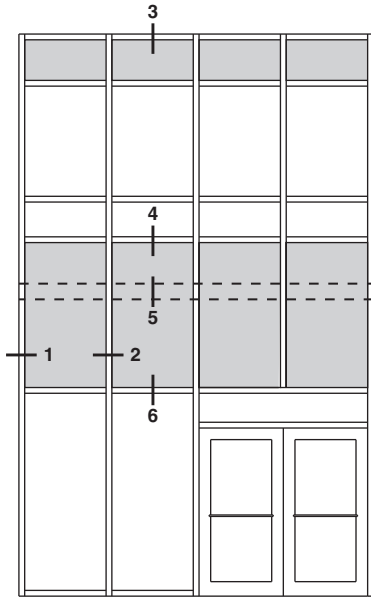


NOTE: AA™6400 vent can be accommodated. Contact your Kawneer representative for other options.

Laws and building and safety codes governing the design and use of glazed entrance, window, and curtain wall products vary widely. Kawneer does not control the selection of product configurations, operating hardware, or glazing materials, and assumes no responsibility therefor.

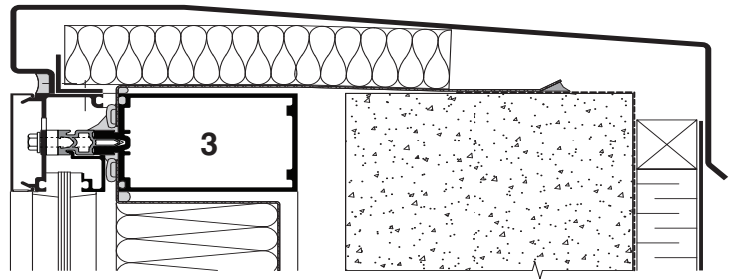
Kawneer reserves the right to change configuration without prior notice when deemed necessary for product improvement.
© Kawneer Company, Inc., 2013

SCALE 3" = 1'-0"

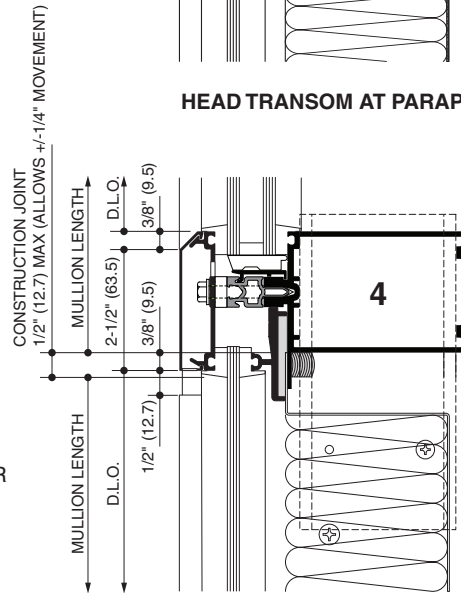


ELEVATION IS NUMBER KEYED TO DETAILS

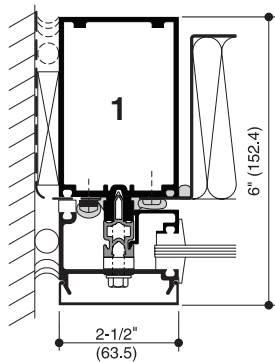
NOTE: 6" SYSTEM SHOWN, 7-1/2" SYSTEM SIMILAR



HEAD TRANSOM AT PARAPET FLASHING

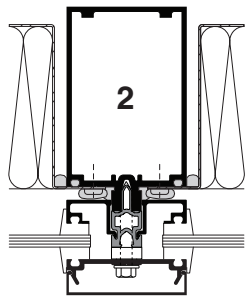


EXPANSION JOINT

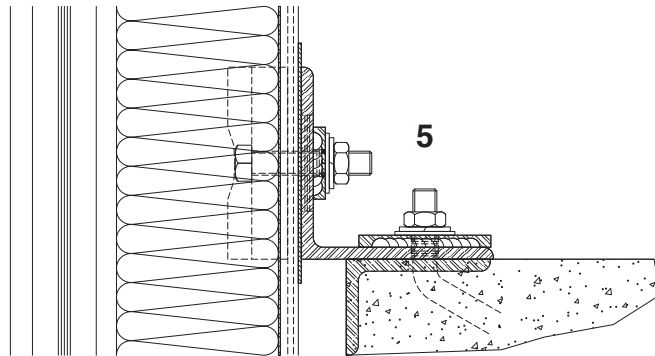


JAMB MULLION AT SPANDREL

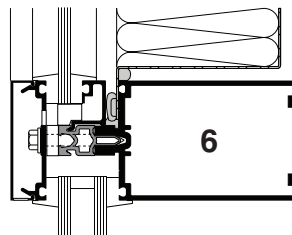
(With vapor barrier tie-in)



MULLION AT SPANDREL



TYPICAL DEADLOAD ANCHOR

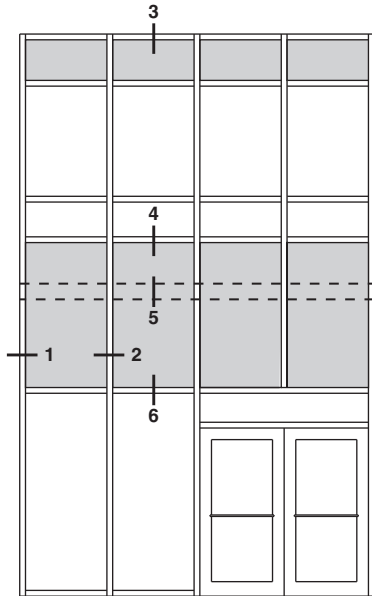


TRANSOM - SPANDREL OVER VISION

Laws and building and safety codes governing the design and use of glazed entrance, window, and curtain wall products vary widely. Kawneer does not control the selection of product configurations, operating hardware, or glazing materials, and assumes no responsibility therefor.

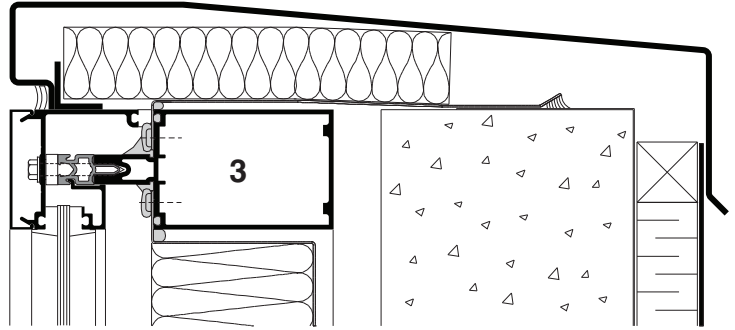
Kawneer reserves the right to change configuration without prior notice when deemed necessary for product improvement.
© Kawneer Company, Inc., 2013

SCALE 3" = 1'-0"

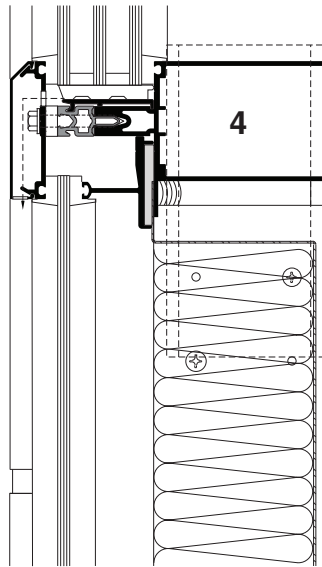


ELEVATION IS NUMBER KEYED TO DETAILS

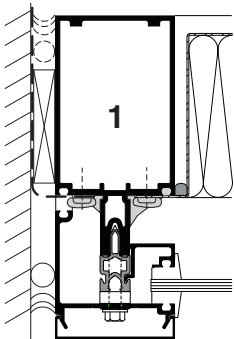
NOTE: 6" SYSTEM SHOWN, 7-1/2" SYSTEM SIMILAR



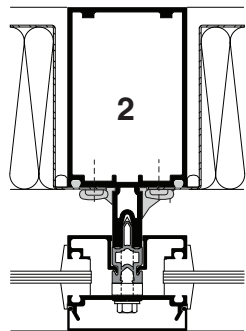
HEAD TRANSOM AT PARAPET FLASHING



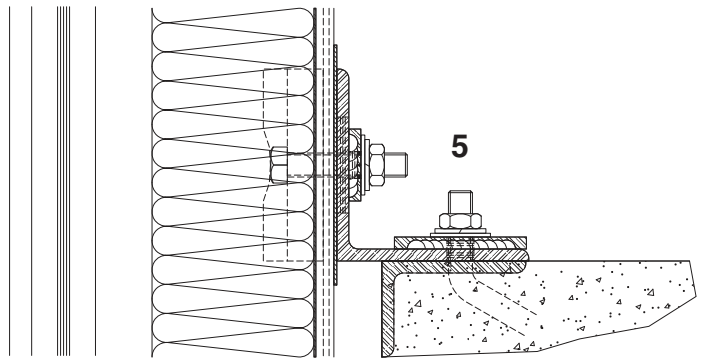
EXPANSION JOINT



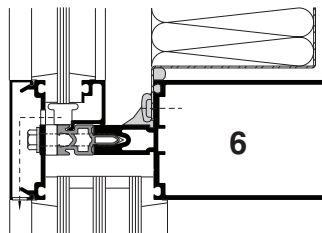
JAMB MULLION AT SPANDREL (With vapor barrier tie-in)



MULLION AT SPANDREL



TYPICAL DEADLOAD ANCHOR



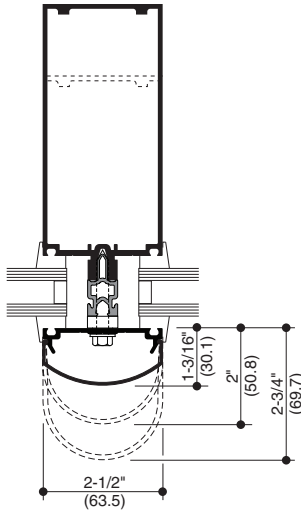
TRANSOM – SPANDREL OVER VISION

Laws and building and safety codes governing the design and use of glazed entrance, window, and curtain wall products vary widely. Kawneer does not control the selection of product configurations, operating hardware, or glazing materials, and assumes no responsibility therefor.

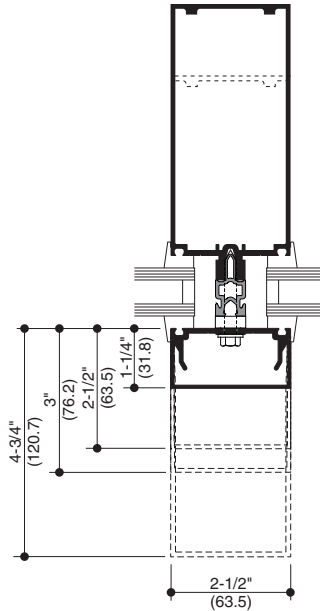
Kawneer reserves the right to change configuration without prior notice when deemed necessary for product improvement.
© Kawneer Company, Inc., 2013

SCALE 3" = 1'-0"

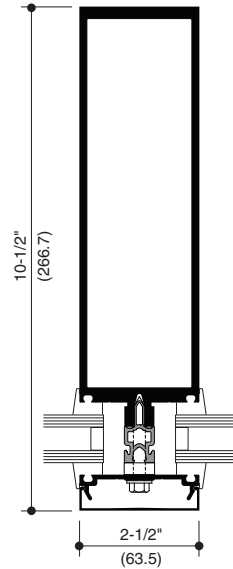
Architects – Most extrusion and window types illustrated in this catalog are standard products for Kawneer. These concepts have been expanded and modified to afford you design freedom. Some miscellaneous details are non-standard and are intended to demonstrate how the system can be modified to expand design flexibility. Please contact your Kawneer representative for further assistance.



**OPTIONAL
BULL NOSE COVERS**

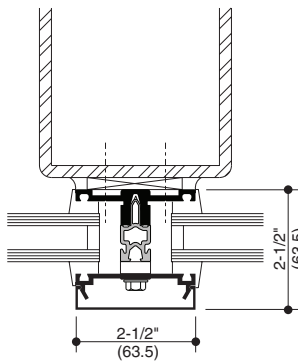


**OPTIONAL
DEEP COVERS**

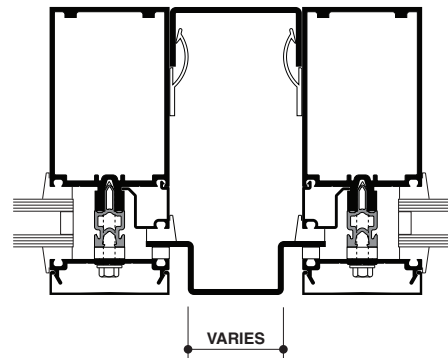
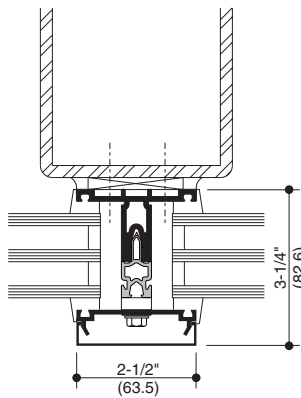


DEEP MULLION

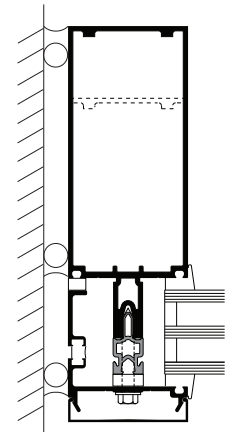
NOTE: 1-3/4" triple glazing similar.



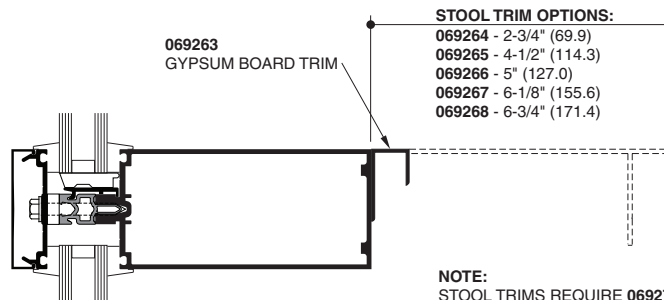
VENEER SYSTEM



DOUBLE MULLION



**THERMAL
PERIMETER
PRESSURE PLATE**

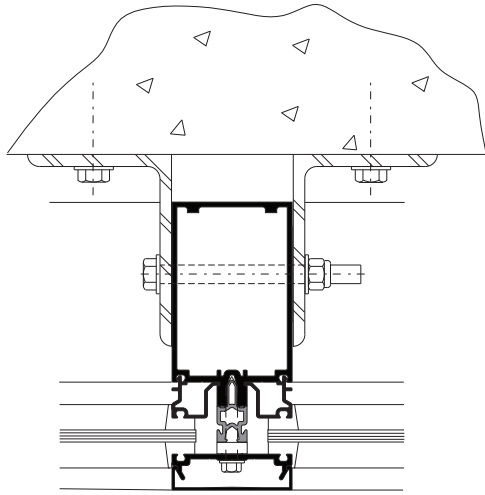


INTERIOR STOOL TRIM

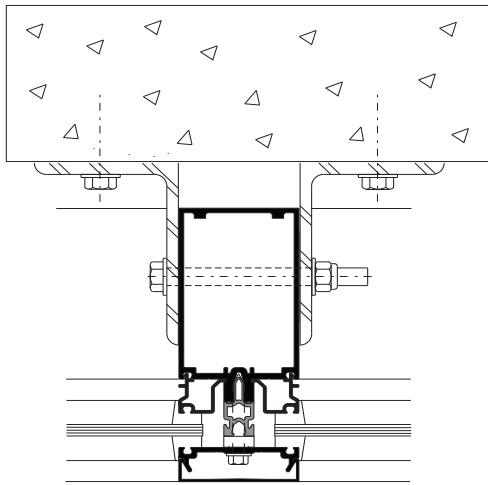
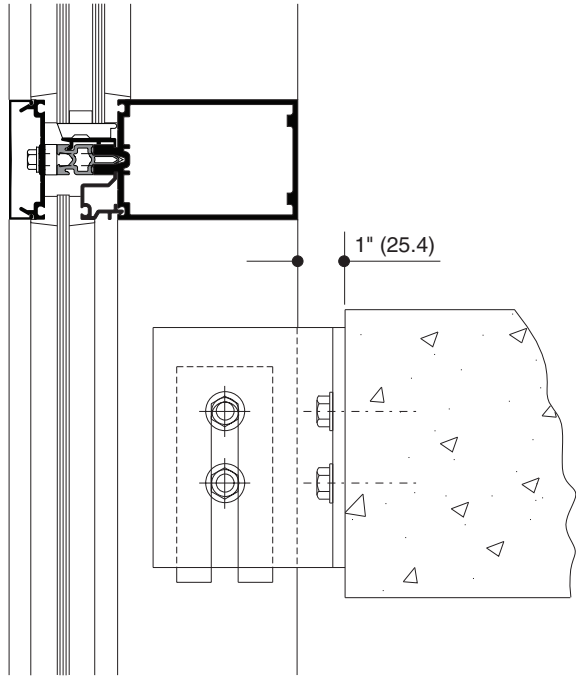
Laws and building and safety codes governing the design and use of glazed entrance, window, and curtain wall products vary widely. Kawneer does not control the selection of product configurations, operating hardware, or glazing materials, and assumes no responsibility therefor.

Kawneer reserves the right to change configuration without prior notice when deemed necessary for product improvement.
© Kawneer Company, Inc., 2013

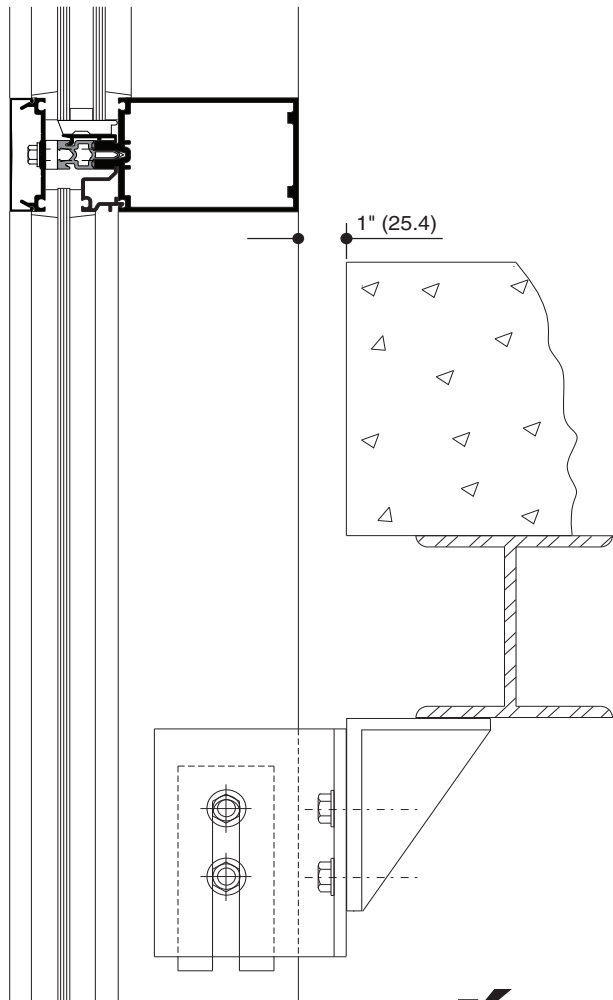
Actual project conditions will determine specific anchor design. Details on this page are for reference only.



ANCHORING TO FLOOR SLAB



ANCHORING TO SUPPORT STEEL

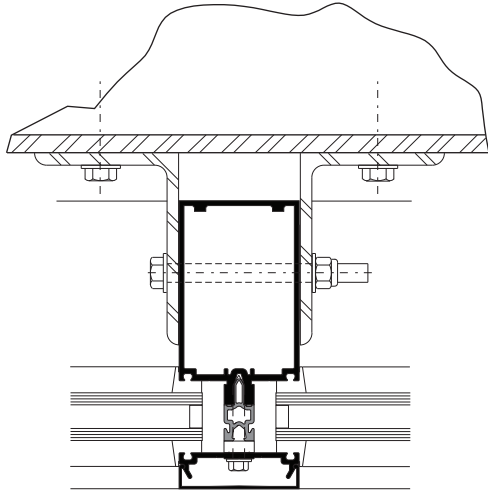


NOTE: 1-3/4" triple glazing similar.

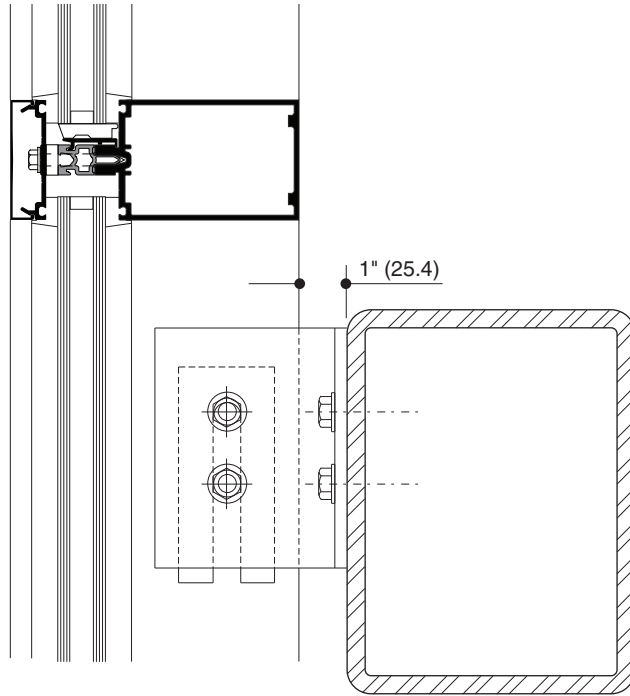
Laws and building and safety codes governing the design and use of glazed entrance, window, and curtain wall products vary widely. Kawneer does not control the selection of product configurations, operating hardware, or glazing materials, and assumes no responsibility therefor.

Kawneer reserves the right to change configuration without prior notice when deemed necessary for product improvement.
© Kawneer Company, Inc., 2013

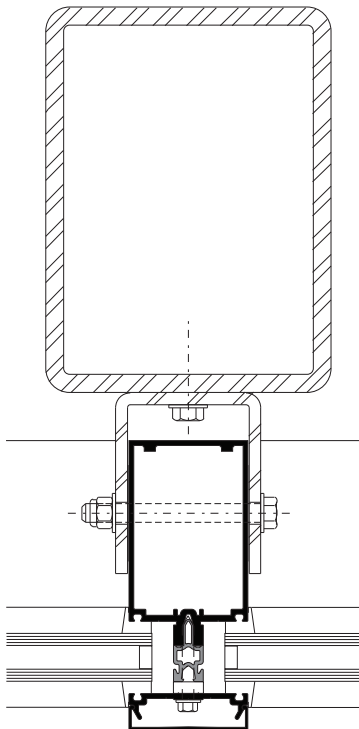
Actual project conditions will determine specific anchor design. Details on this page are for reference only.



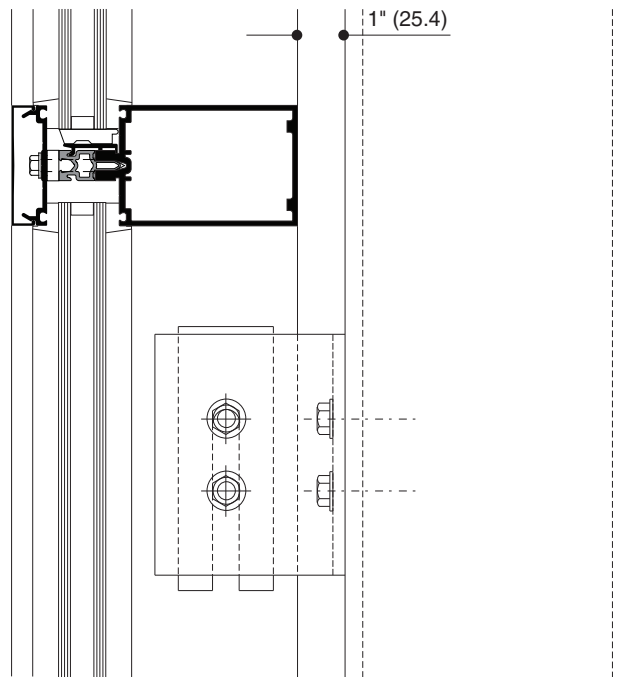
ANCHORING TO HORIZONTAL STRUCTURAL STEEL



NOTE: 1-3/4" triple glazing similar.



ANCHORING TO VERTICAL STRUCTURAL STEEL



Laws and building and safety codes governing the design and use of glazed entrance, window, and curtain wall products vary widely. Kawneer does not control the selection of product configurations, operating hardware, or glazing materials, and assumes no responsibility therefor.

Kawneer reserves the right to change configuration without prior notice when deemed necessary for product improvement.
© Kawneer Company, Inc., 2013

WIND LOAD CHARTS

Mullions are designed for deflection limitations in accordance with AAMA TIR-A11 of L/175 up to 13'-6" and L/240 +1/4" above 13'-6". These curves are for mullions WITH HORIZONTALS and are based on engineering calculations for stress and deflection. Allowable wind load stress for ALUMINUM 15,152 psi (104MPa), STEEL 30,000 psi (207MPa.). Charted curves, in all cases are for the limiting value. Wind load charts contained herein are based upon nominal wind load utilized in allowable stress design. To convert ultimate wind loads to nominal loads, multiply ultimate wind loads by a factor of 0.6 per ASCE/SEI 7. A 4/3 increase in allowable stress has not been used to develop these curves. For special situations not covered by these curves, contact your Kawneer representative for additional information.

DEADLOAD CHARTS

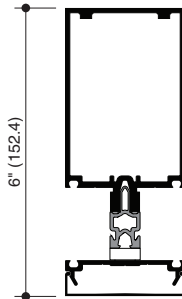
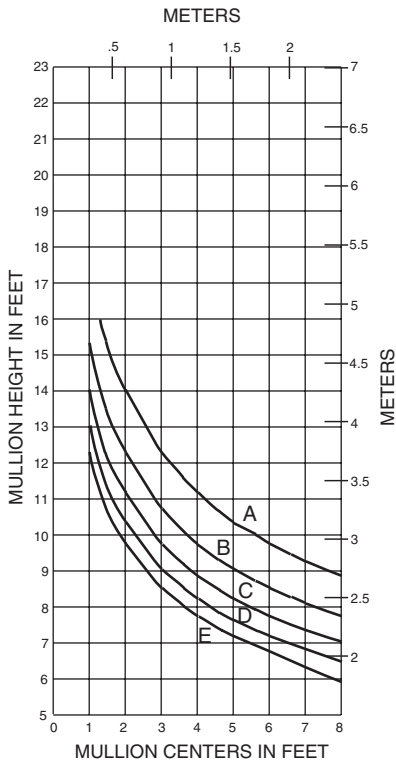
Horizontal or deadload limitations are based upon 1/8" (3.2), maximum allowable deflection at the center of an intermediate horizontal member. The accompanying charts are calculated for 1" (25.4) thick insulating glass or 1-3/4" (44.5) thick glass supported on two setting blocks placed at the loading points shown.

Laws and building and safety codes governing the design and use of glazed entrance, window, and curtain wall products vary widely. Kawneer does not control the selection of product configurations, operating hardware, or glazing materials, and assumes no responsibility therefor.

Kawneer reserves the right to change configuration without prior notice when deemed necessary for product improvement.
© Kawneer Company, Inc., 2013

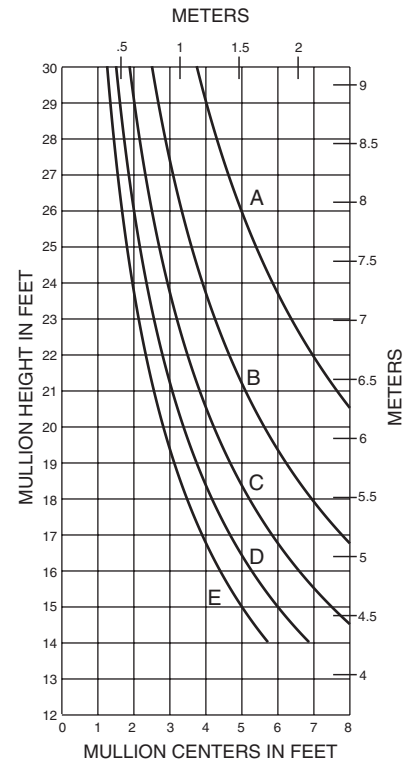
- A = 20 PSF (960)
- B = 30 PSF (1440)
- C = 40 PSF (1920)
- D = 50 PSF (2400)
- E = 60 PSF (2880)

SINGLE SPAN

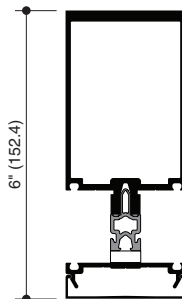
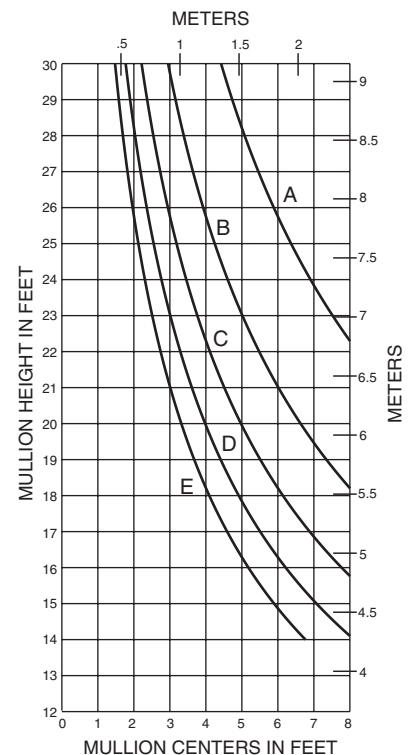


171213
 $I = 3.662(152.42 \times 10^4)$
 $S = 1.662(27.24 \times 10^3)$

TWIN SPAN

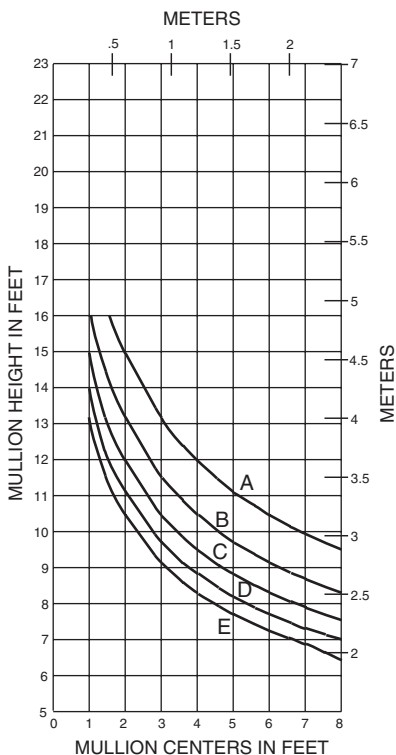


TWIN SPAN



171214
 $I = 4.5071(87.60 \times 10^4)$
 $S = 1.968(32.25 \times 10^3)$

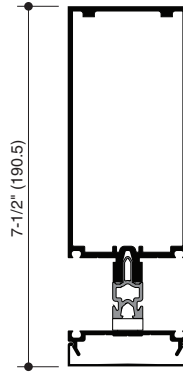
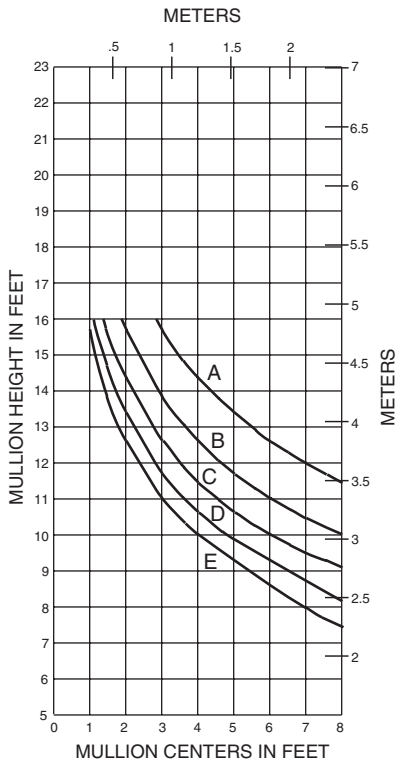
SINGLE SPAN



Laws and building and safety codes governing the design and use of glazed entrance, window, and curtain wall products vary widely. Kawneer does not control the selection of product configurations, operating hardware, or glazing materials, and assumes no responsibility therefor.

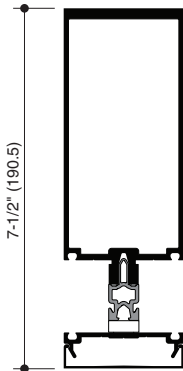
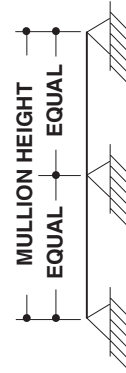
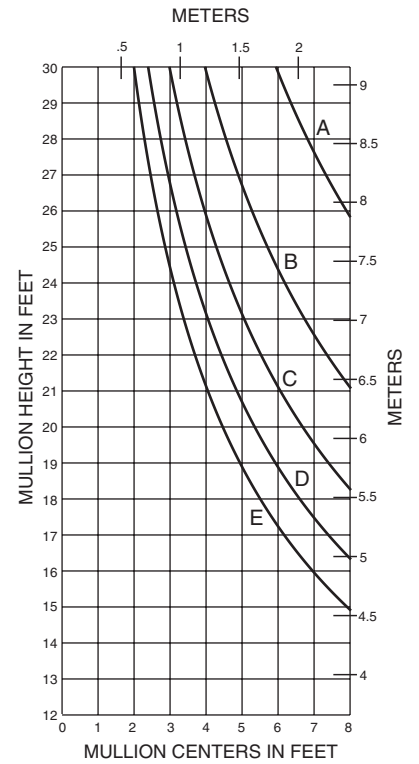
Kawneer reserves the right to change configuration without prior notice when deemed necessary for product improvement.
 © Kawneer Company, Inc., 2013

SINGLE SPAN



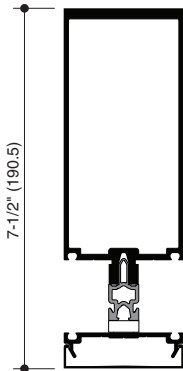
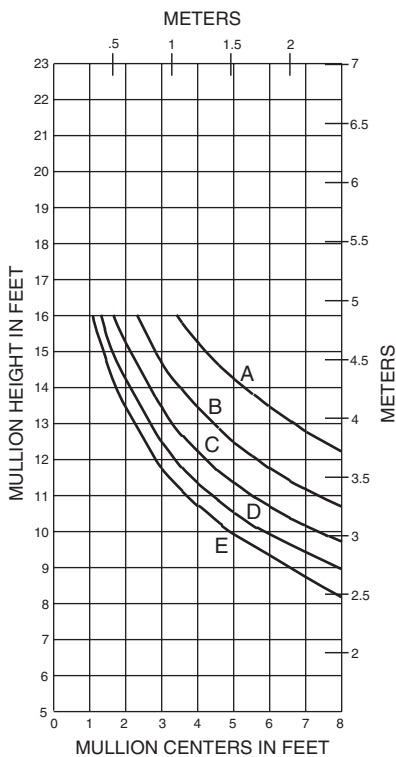
171215
 $I = 7.915(329.45 \times 10^4)$
 $S = 2.635(43.18 \times 10^3)$

TWIN SPAN



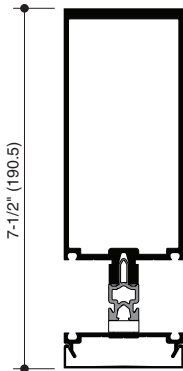
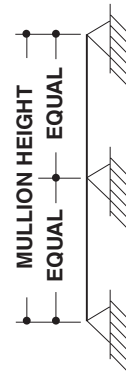
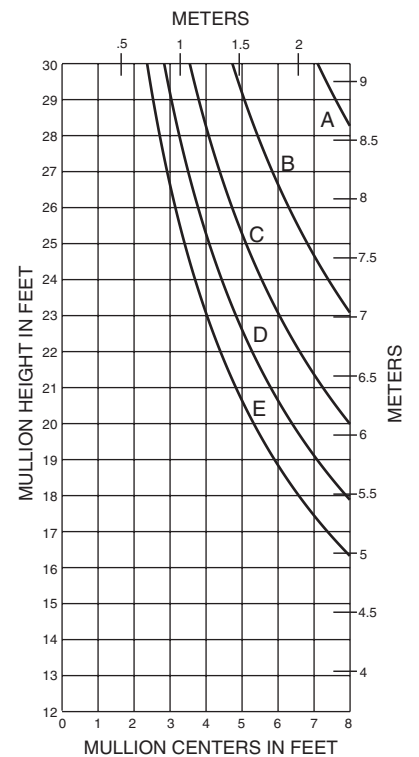
171216
 $I = 9.594(399.33 \times 10^4)$
 $S = 3.163(51.83 \times 10^3)$

SINGLE SPAN



171216
 $I = 9.594(399.33 \times 10^4)$
 $S = 3.163(51.83 \times 10^3)$

TWIN SPAN



171216
 $I = 9.594(399.33 \times 10^4)$
 $S = 3.163(51.83 \times 10^3)$

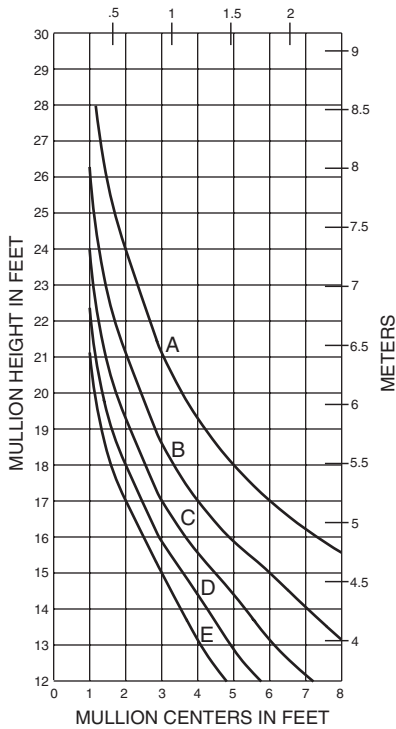
Laws and building and safety codes governing the design and use of glazed entrance, window, and curtain wall products vary widely. Kawneer does not control the selection of product configurations, operating hardware, or glazing materials, and assumes no responsibility therefor.

Kawneer reserves the right to change configuration without prior notice when deemed necessary for product improvement.
 © Kawneer Company, Inc., 2013

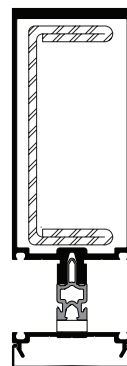
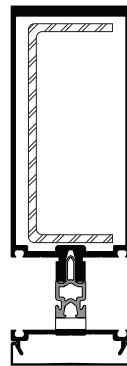
SINGLE SPAN

162016 W/162300

METERS



- A = 20 PSF (960)
- B = 30 PSF (1440)
- C = 40 PSF (1920)
- D = 50 PSF (2400)
- E = 60 PSF (2880)



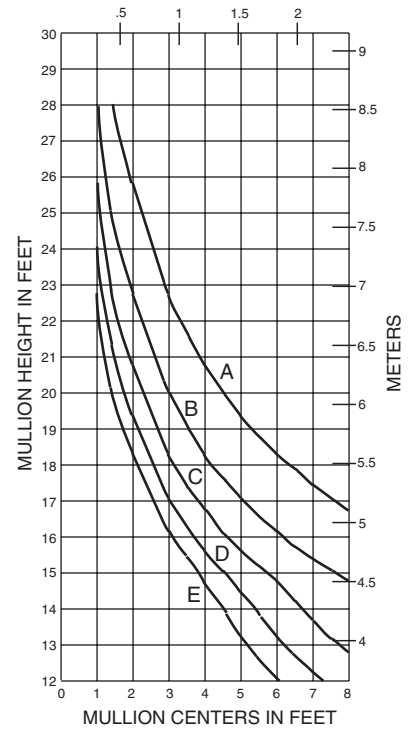
171216
W/162300
Ia = 9.594(399.33 x 10⁴)
Sa = 3.163(51.83 x 10³)
Is = 3.805(158.37 x 10⁴)
Ss = 1.669(27.35 x 10³)

171216
W/162301
Ia = 9.594(399.33 x 10⁴)
Sa = 3.163(51.83 x 10³)
Is = 5.684(236.59 x 10⁴)
Ss = 2.493(40.85 x 10³)

SINGLE SPAN

162016 W/162301

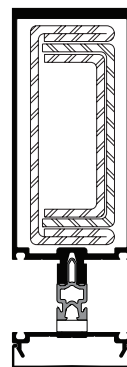
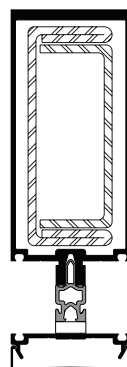
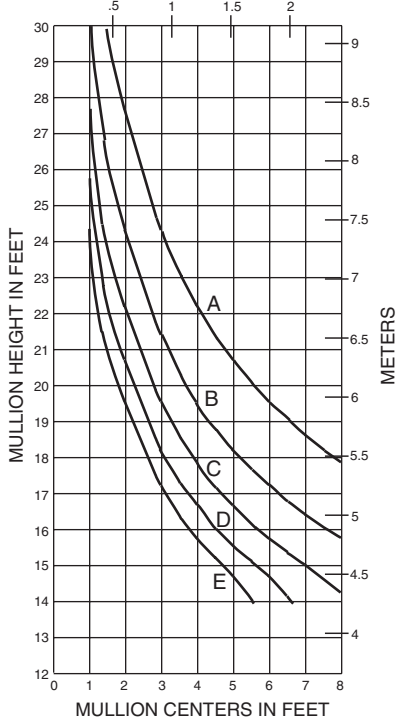
METERS



SINGLE SPAN

162016 W/162301/302

METERS



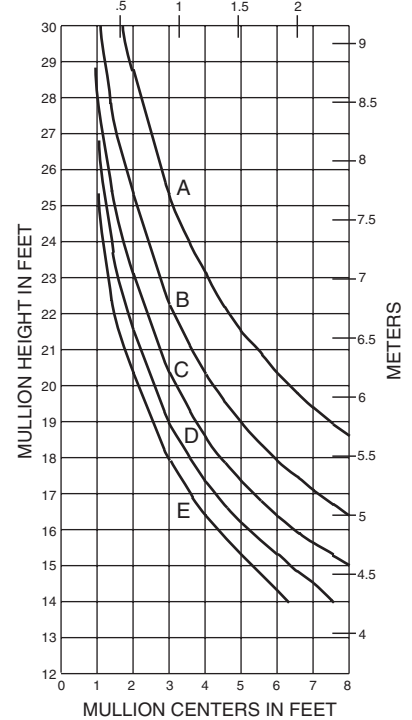
171216
W/162301/302
Ia = 9.594(399.33 x 10⁴)
Sa = 3.163(51.83 x 10³)
Is = 7.893(328.53 x 10⁴)
Ss = 3.462(56.73 x 10³)

171216
W/162301/302/303
Ia = 9.594(399.33 x 10⁴)
Sa = 3.163(51.83 x 10³)
Is = 9.347(389.05 x 10⁴)
Ss = 4.100(67.19 x 10³)

SINGLE SPAN

162016 W/162301/302/303

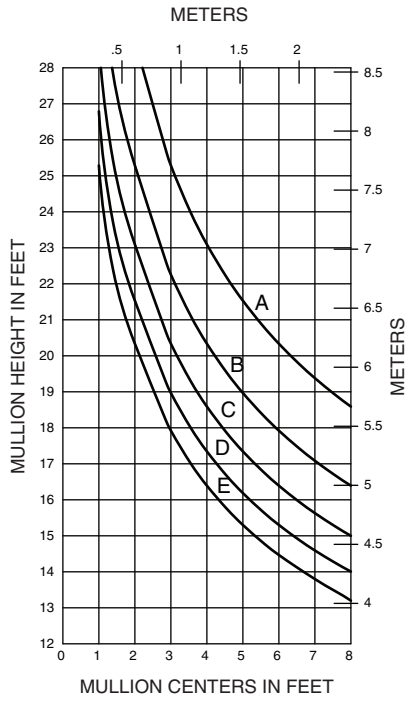
METERS



Laws and building and safety codes governing the design and use of glazed entrance, window, and curtain wall products vary widely. Kawneer does not control the selection of product configurations, operating hardware, or glazing materials, and assumes no responsibility therefor.

Kawneer reserves the right to change configuration without prior notice when deemed necessary for product improvement.
© Kawneer Company, Inc., 2013

SINGLE SPAN



- A = 20 PSF (960)
- B = 30 PSF (1440)
- C = 40 PSF (1920)
- D = 50 PSF (2400)
- E = 60 PSF (2880)

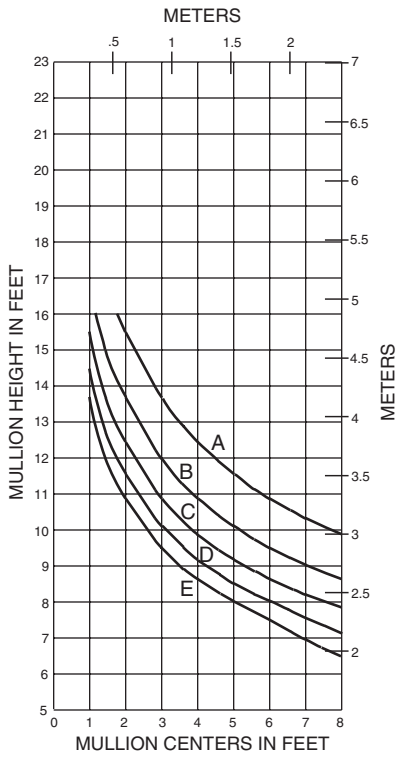


171266
 I = 36.451 (1517.20 x 10³)
 S = 8.279 (135.67 x 10³)

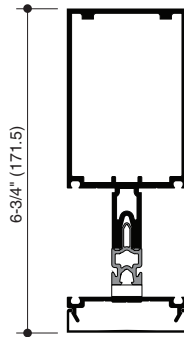
Laws and building and safety codes governing the design and use of glazed entrance, window, and curtain wall products vary widely. Kawneer does not control the selection of product configurations, operating hardware, or glazing materials, and assumes no responsibility therefor.

Kawneer reserves the right to change configuration without prior notice when deemed necessary for product improvement.
 © Kawneer Company, Inc., 2013

SINGLE SPAN



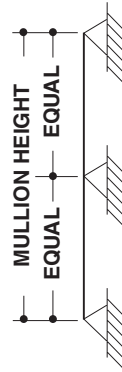
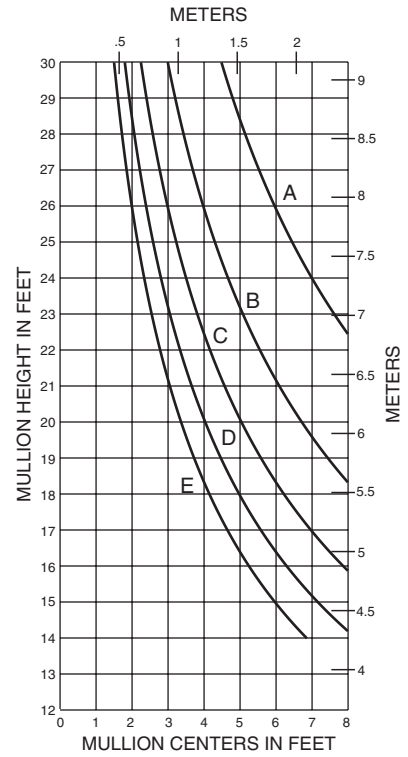
- A = 20 PSF (960)
- B = 30 PSF (1440)
- C = 40 PSF (1920)
- D = 50 PSF (2400)
- E = 60 PSF (2880)



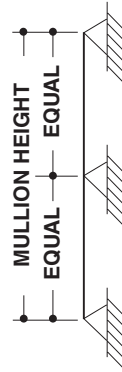
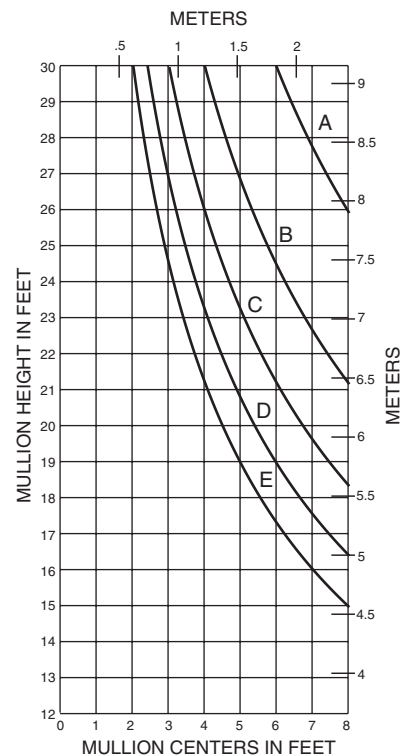
171201

I = 5.035(209.57 x 10⁴)
S = 1.993(32.66 x 10³)

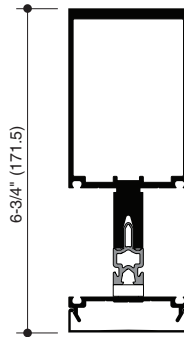
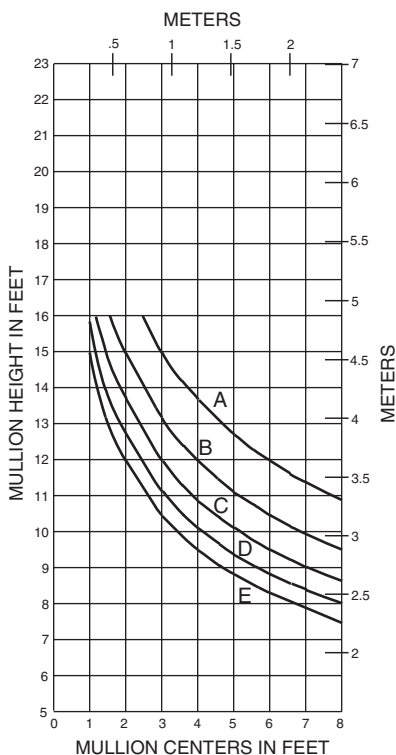
TWIN SPAN



TWIN SPAN



SINGLE SPAN



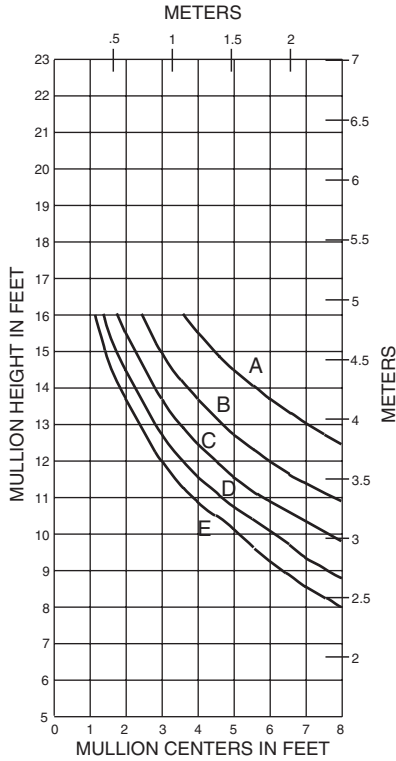
171202

I = 6.779(282.16 x 10⁴)
S = 2.652(43.46 x 10³)

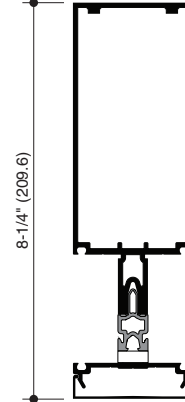
Laws and building and safety codes governing the design and use of glazed entrance, window, and curtain wall products vary widely. Kawneer does not control the selection of product configurations, operating hardware, or glazing materials, and assumes no responsibility therefor.

Kawneer reserves the right to change configuration without prior notice when deemed necessary for product improvement.
© Kawneer Company, Inc., 2013

SINGLE SPAN



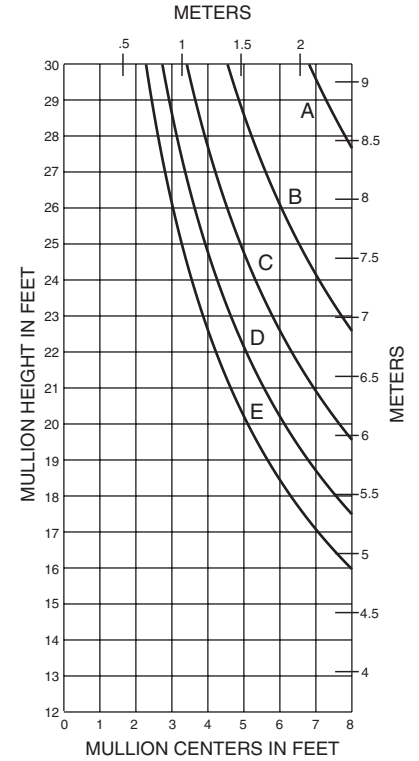
- A = 20 PSF (960)
- B = 30 PSF (1440)
- C = 40 PSF (1920)
- D = 50 PSF (2400)
- E = 60 PSF (2880)



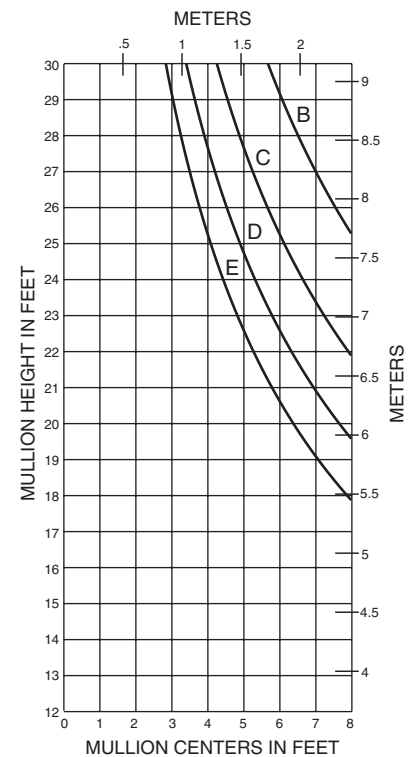
171203

I = 10.135(421.85 x 10⁶)
S = 3.027(49.60 x 10³)

TWIN SPAN



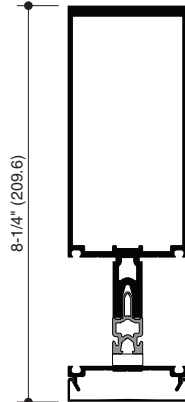
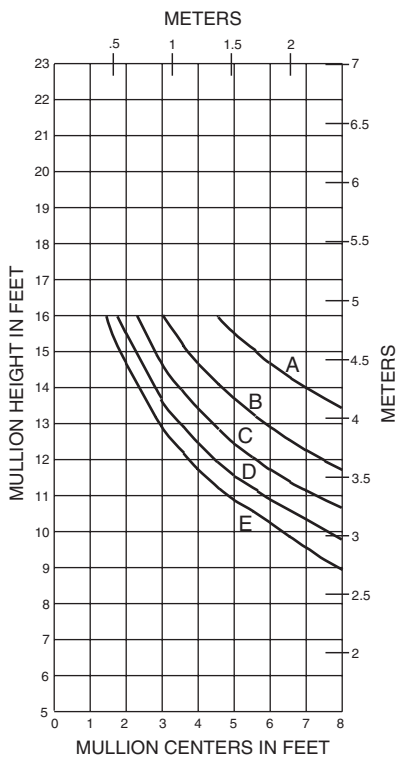
TWIN SPAN



171204

I = 12.736(530.11 x 10⁶)
S = 3.791(62.12 x 10³)

SINGLE SPAN

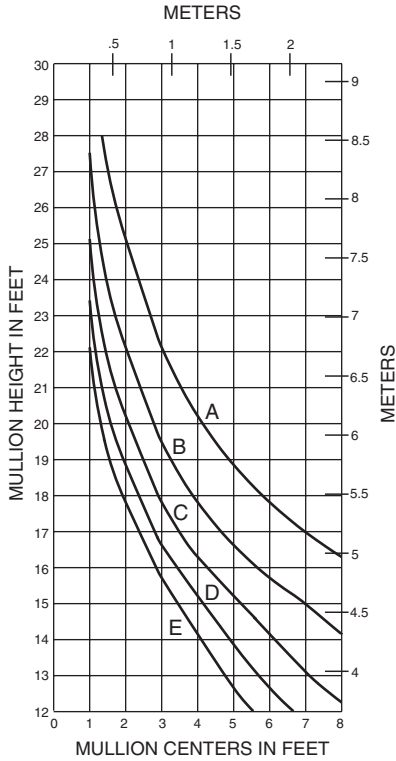


Laws and building and safety codes governing the design and use of glazed entrance, window, and curtain wall products vary widely. Kawneer does not control the selection of product configurations, operating hardware, or glazing materials, and assumes no responsibility therefor.

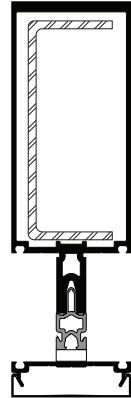
Kawneer reserves the right to change configuration without prior notice when deemed necessary for product improvement.
© Kawneer Company, Inc., 2013

SINGLE SPAN

162004 W/162300

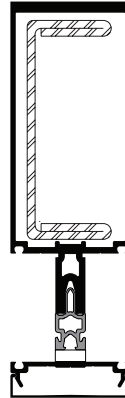


- A = 20 PSF (960)
- B = 30 PSF (1440)
- C = 40 PSF (1920)
- D = 50 PSF (2400)
- E = 60 PSF (2880)



**171204
W/162300**

la = 12.736(530.11 x 10⁴)
 Sa = 3.791(62.12 x 10³)
 ls = 3.805(158.37 x 10⁴)
 Ss = 1.669(27.35 x 10³)

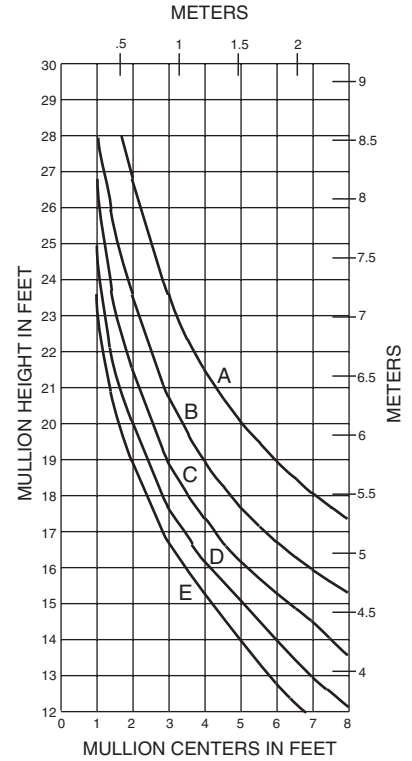


**171204
W/162301**

la = 12.736(530.11 x 10⁴)
 Sa = 3.791(62.12 x 10³)
 ls = 5.684(236.59 x 10⁴)
 Ss = 2.493(40.85 x 10³)

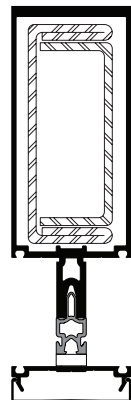
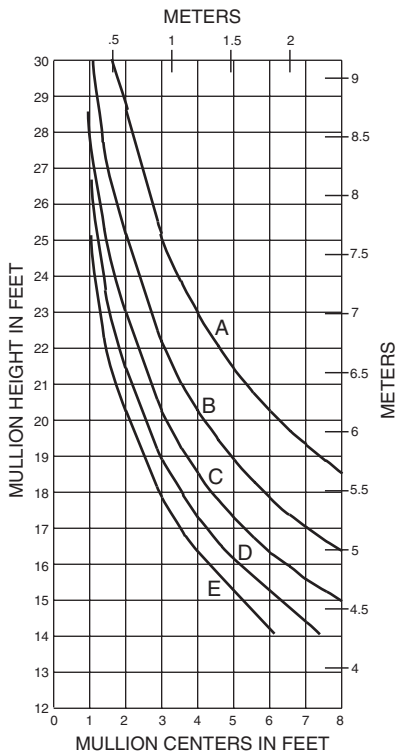
SINGLE SPAN

162004 W/162301



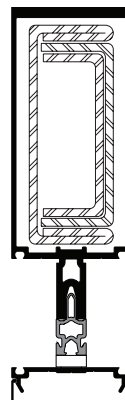
SINGLE SPAN

162004 W/162301/302



**171204
W/162301/302**

la = 12.736(530.11 x 10⁴)
 Sa = 3.791(62.12 x 10³)
 ls = 7.893(328.53 x 10⁴)
 Ss = 3.462(56.73 x 10³)

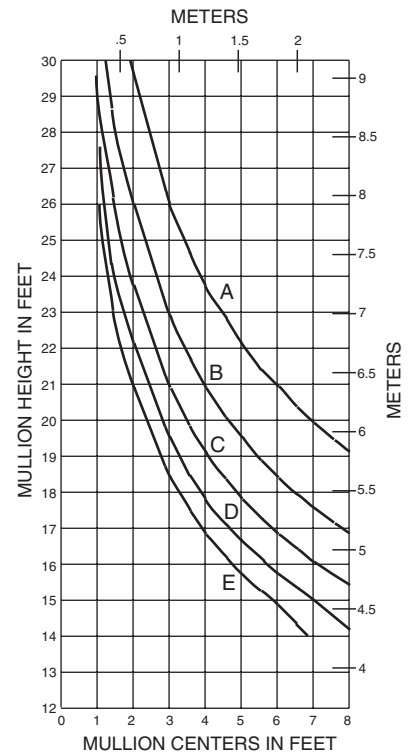


**171204
W/162301/302/303**

la = 12.736(530.11 x 10⁴)
 Sa = 3.791(62.12 x 10³)
 ls = 9.347(389.05 x 10⁴)
 Ss = 4.100(67.19 x 10³)

SINGLE SPAN

162004 W/162301/302/303

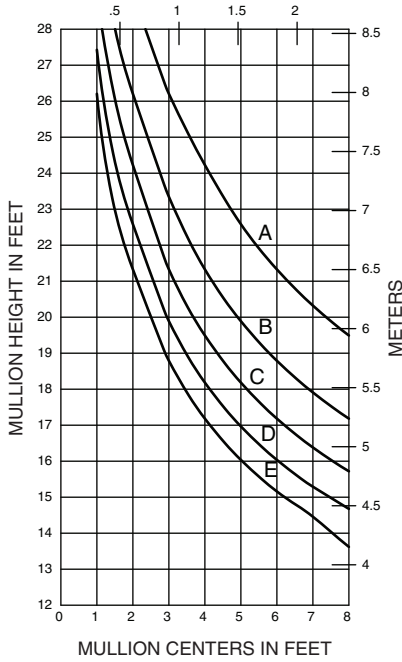


Laws and building and safety codes governing the design and use of glazed entrance, window, and curtain wall products vary widely. Kawneer does not control the selection of product configurations, operating hardware, or glazing materials, and assumes no responsibility therefor.

Kawneer reserves the right to change configuration without prior notice when deemed necessary for product improvement.
 © Kawneer Company, Inc., 2013

SINGLE SPAN

METERS



- A = 20 PSF (960)
- B = 30 PSF (1440)
- C = 40 PSF (1920)
- D = 50 PSF (2400)
- E = 60 PSF (2880)



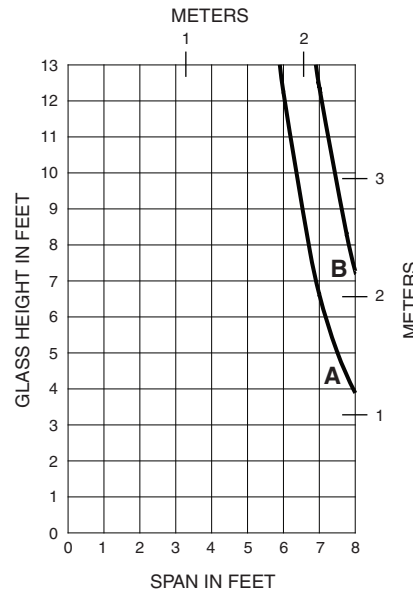
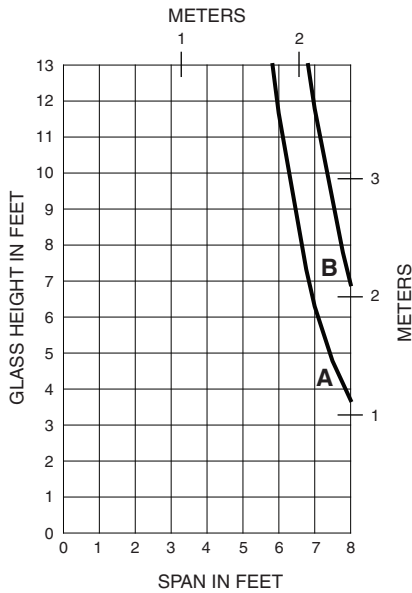
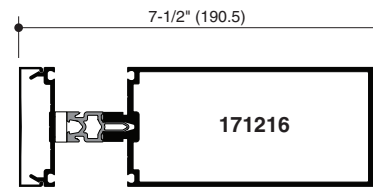
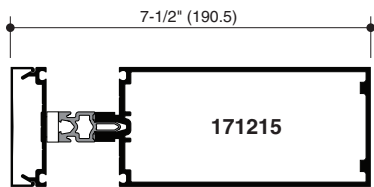
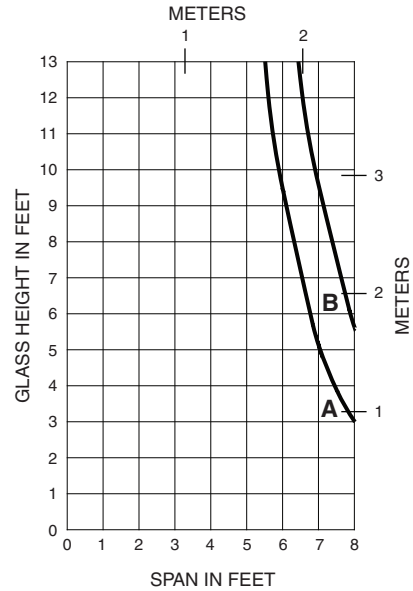
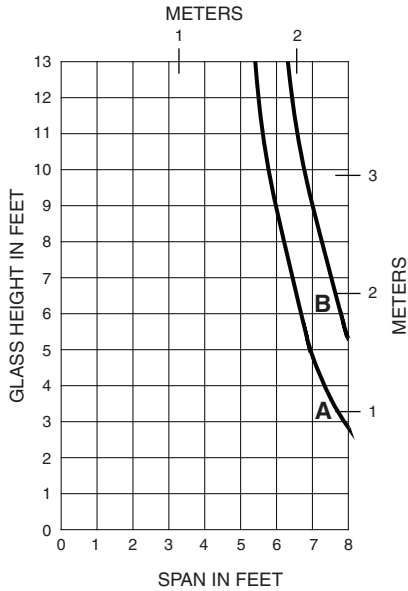
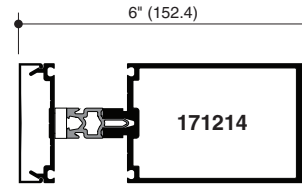
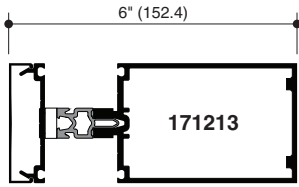
171264

I = 42.441 (1766.52 x 10⁴)
 S = 8.816 (144.47 x 10³)

Laws and building and safety codes governing the design and use of glazed entrance, window, and curtain wall products vary widely. Kawneer does not control the selection of product configurations, operating hardware, or glazing materials, and assumes no responsibility therefor.

Kawneer reserves the right to change configuration without prior notice when deemed necessary for product improvement.
 © Kawneer Company, Inc., 2013

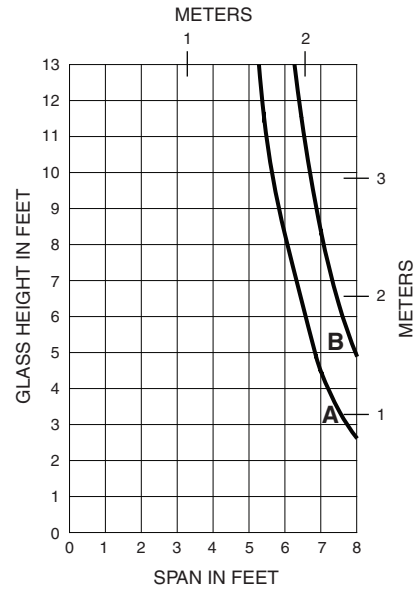
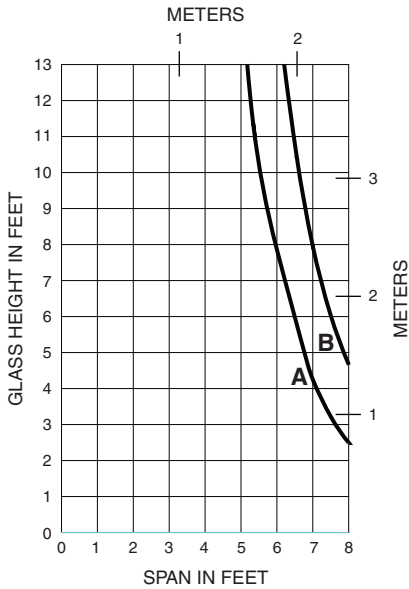
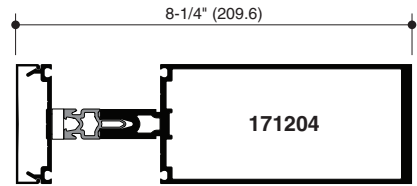
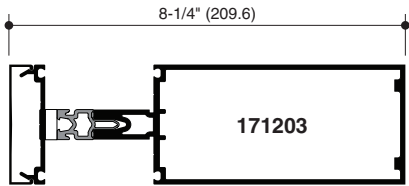
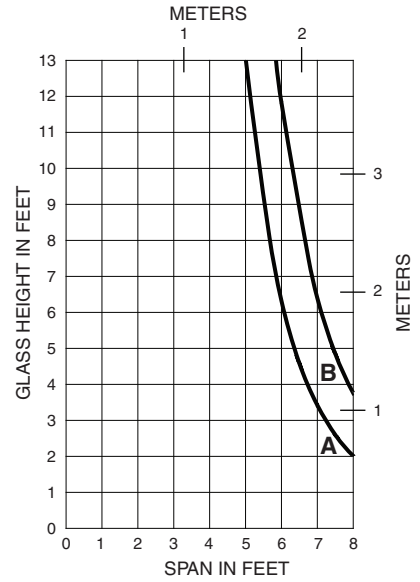
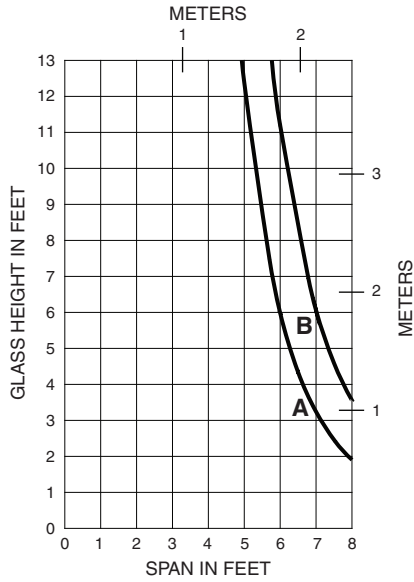
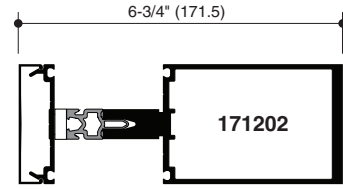
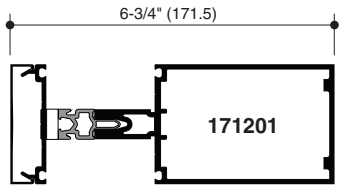
A - 1" GLASS (1/4 POINT LOADING)
 B - 1" GLASS (1/8 POINT LOADING)



Laws and building and safety codes governing the design and use of glazed entrance, window, and curtain wall products vary widely. Kawneer does not control the selection of product configurations, operating hardware, or glazing materials, and assumes no responsibility therefor.

Kawneer reserves the right to change configuration without prior notice when deemed necessary for product improvement.
 © Kawneer Company, Inc., 2013

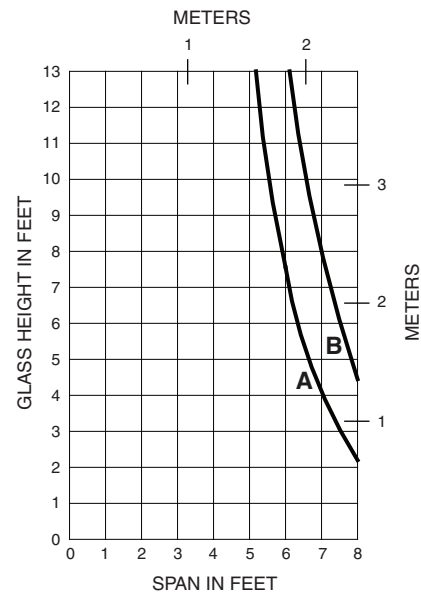
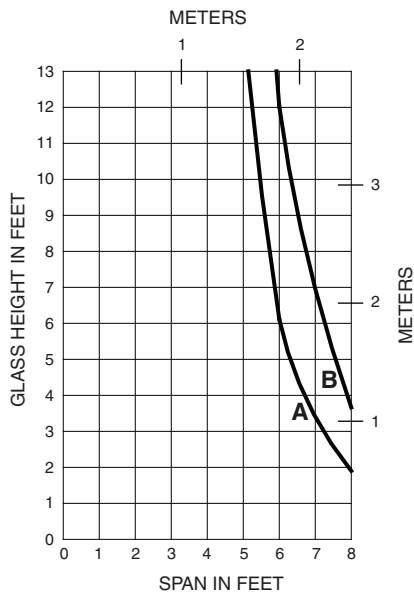
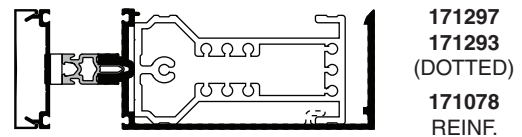
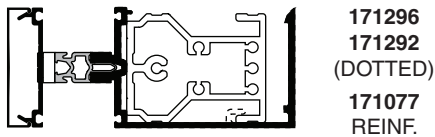
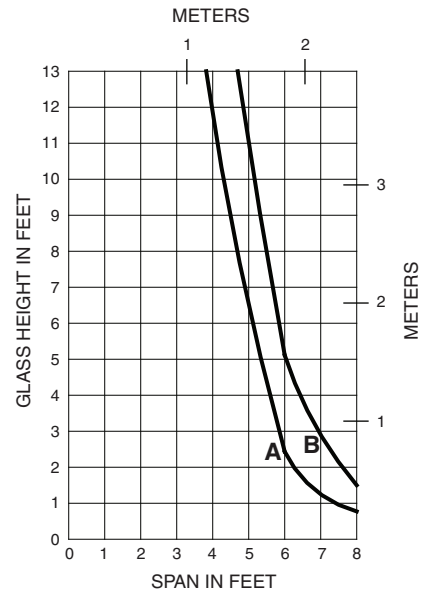
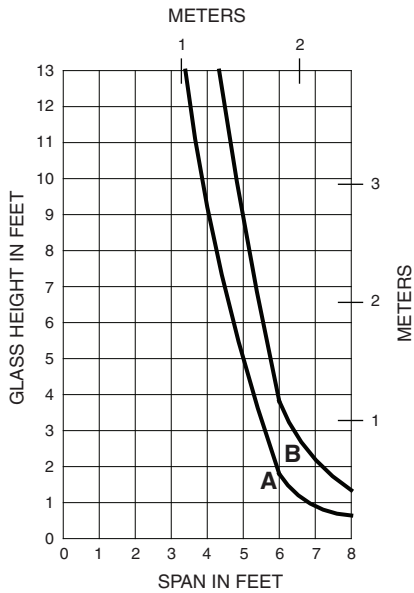
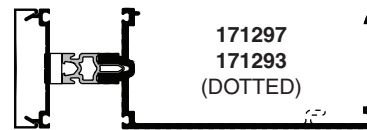
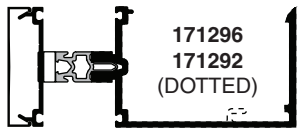
A - 1-3/4" GLASS (1/4 POINT LOADING)
B - 1-3/4" GLASS (1/8 POINT LOADING)



Laws and building and safety codes governing the design and use of glazed entrance, window, and curtain wall products vary widely. Kawneer does not control the selection of product configurations, operating hardware, or glazing materials, and assumes no responsibility therefor.

Kawneer reserves the right to change configuration without prior notice when deemed necessary for product improvement.
© Kawneer Company, Inc., 2013

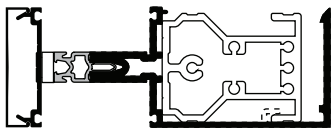
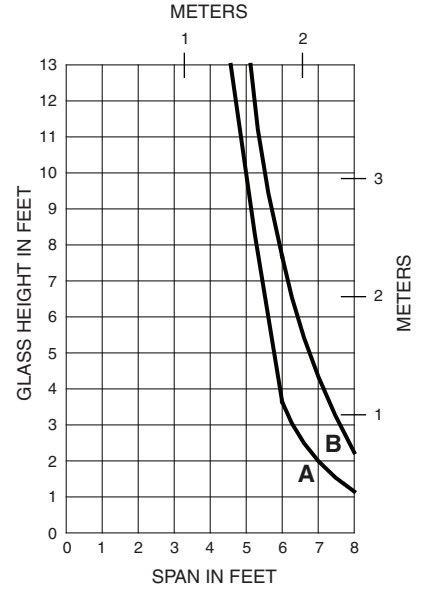
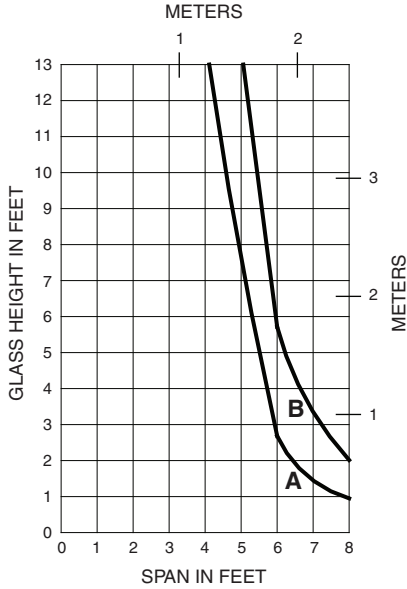
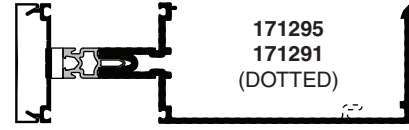
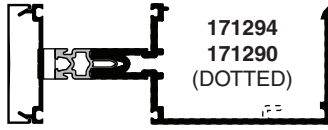
A - 1" GLASS (1/4 POINT LOADING)
 B - 1" GLASS (1/8 POINT LOADING)



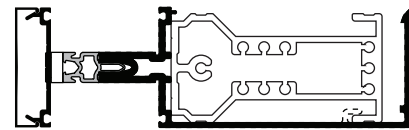
Laws and building and safety codes governing the design and use of glazed entrance, window, and curtain wall products vary widely. Kawneer does not control the selection of product configurations, operating hardware, or glazing materials, and assumes no responsibility therefor.

Kawneer reserves the right to change configuration without prior notice when deemed necessary for product improvement.
 © Kawneer Company, Inc., 2013

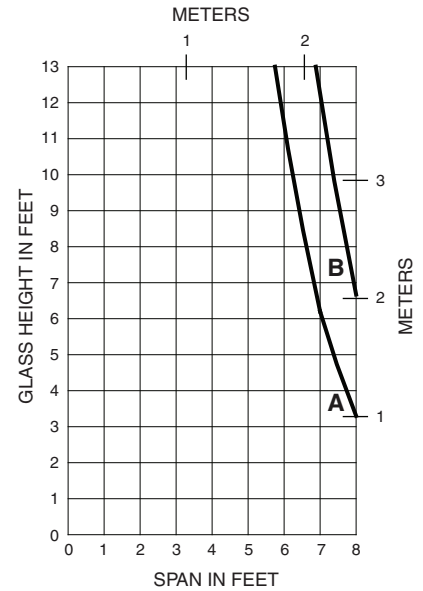
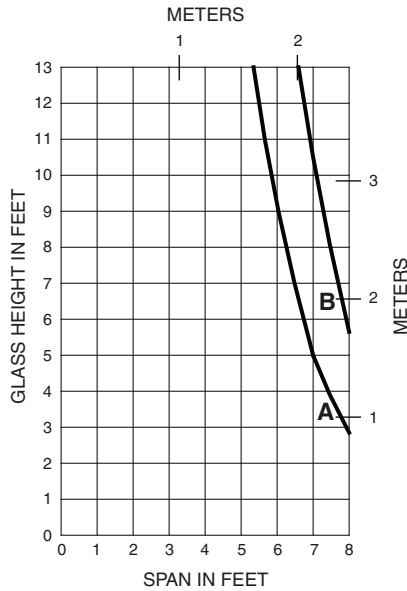
A - 1" GLASS (1/4 POINT LOADING)
 B - 1" GLASS (1/8 POINT LOADING)



171294
 171290
 (DOTTED)
 171077
 REINF.



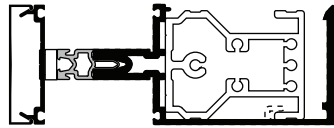
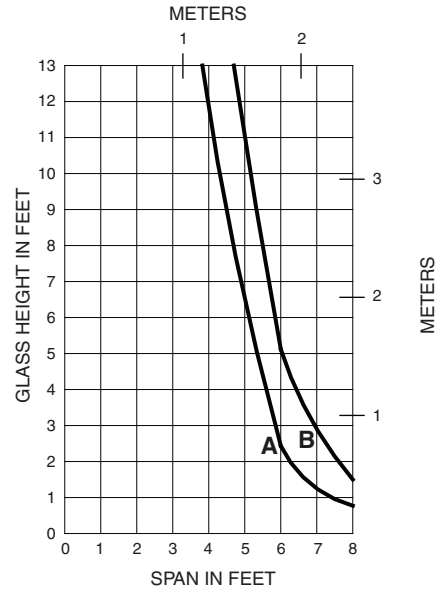
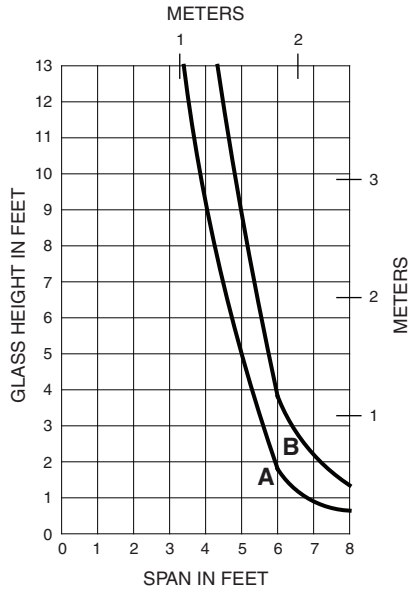
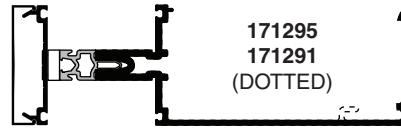
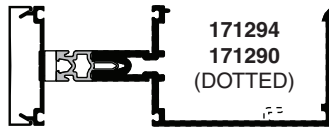
171295
 171291
 (DOTTED)
 171078
 REINF.



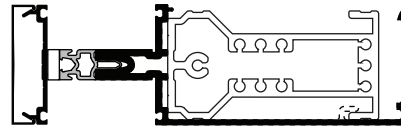
Laws and building and safety codes governing the design and use of glazed entrance, window, and curtain wall products vary widely. Kawneer does not control the selection of product configurations, operating hardware, or glazing materials, and assumes no responsibility therefor.

Kawneer reserves the right to change configuration without prior notice when deemed necessary for product improvement.
 © Kawneer Company, Inc., 2013

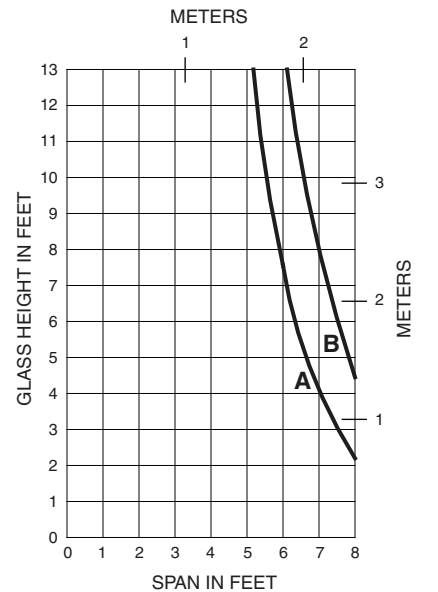
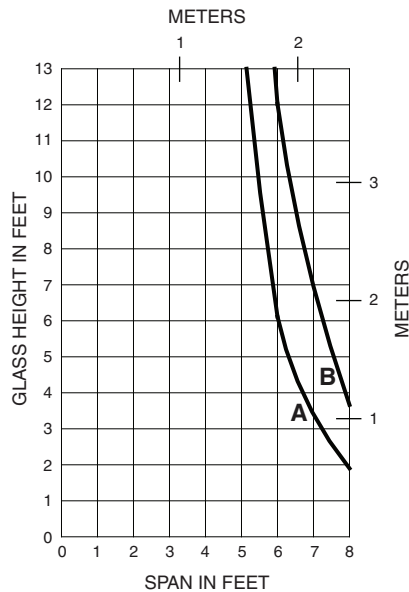
A - 1-3/4" GLASS (1/4 POINT LOADING)
B - 1-3/4" GLASS (1/8 POINT LOADING)



171294
171290
 (DOTTED)
171077
 REINF.



171295
171291
 (DOTTED)
171078
 REINF.



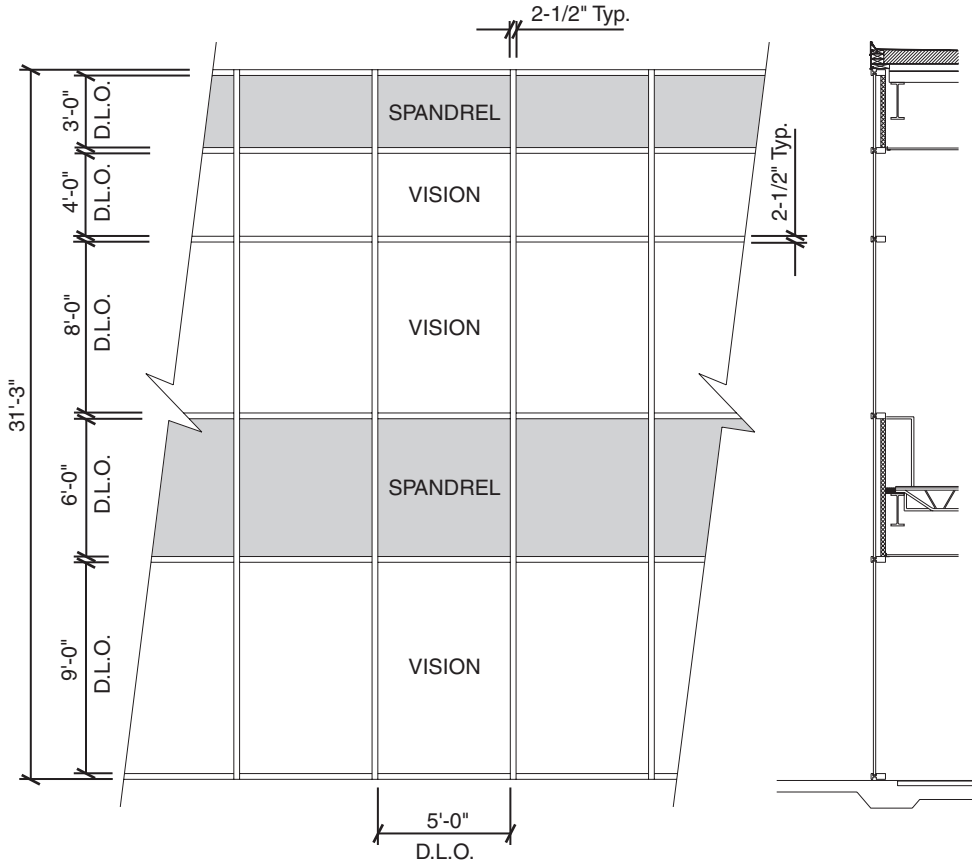
Laws and building and safety codes governing the design and use of glazed entrance, window, and curtain wall products vary widely. Kawneer does not control the selection of product configurations, operating hardware, or glazing materials, and assumes no responsibility therefor.

Kawneer reserves the right to change configuration without prior notice when deemed necessary for product improvement.
 © Kawneer Company, Inc., 2013

Laws and building and safety codes governing the design and use of glazed entrance, window, and curtain wall products vary widely. Kawneer does not control the selection of product configurations, operating hardware, or glazing materials, and assumes no responsibility therefor.

Kawneer reserves the right to change configuration without prior notice when deemed necessary for product improvement.
© Kawneer Company, Inc., 2013

Generic Project Specific U-factor Example Calculation
(Percent of Glass will vary on specific products depending on sitelines)
 (Based on single bay of Curtain Wall/Window Wall)



Vision Area

Example Glass U-factor	= 0.48 Btu/(ft ² · h · °F)
Vision Area	= 5(9 + 8 + 4) = 105.0 ft ²
Total Area (Vision)	= 5' 2-1/2" (9' 3-3/4" + 8' 2-1/2" + 4' 2-1/2") = 113.2 ft ²
Percentage of Vision Glass	= (Vision Area ÷ Total Area)100 = (105.0 ÷ 113.2)100 = 93%

Spandrel Area

Example Spandrel R-value	= 15 (ft ² · h · °F)/Btu
Spandrel Area	= 5(6 + 3) = 45.0 ft ²
Total Area (Spandrel)	= 5' 2-1/2" (6' 2-1/2" + 3' 3-3/4") = 49.6 ft ²
Percent of Spandrel	= (Spandrel Area ÷ Total Area)100 = (45.0 ÷ 49.6)100 = 91%

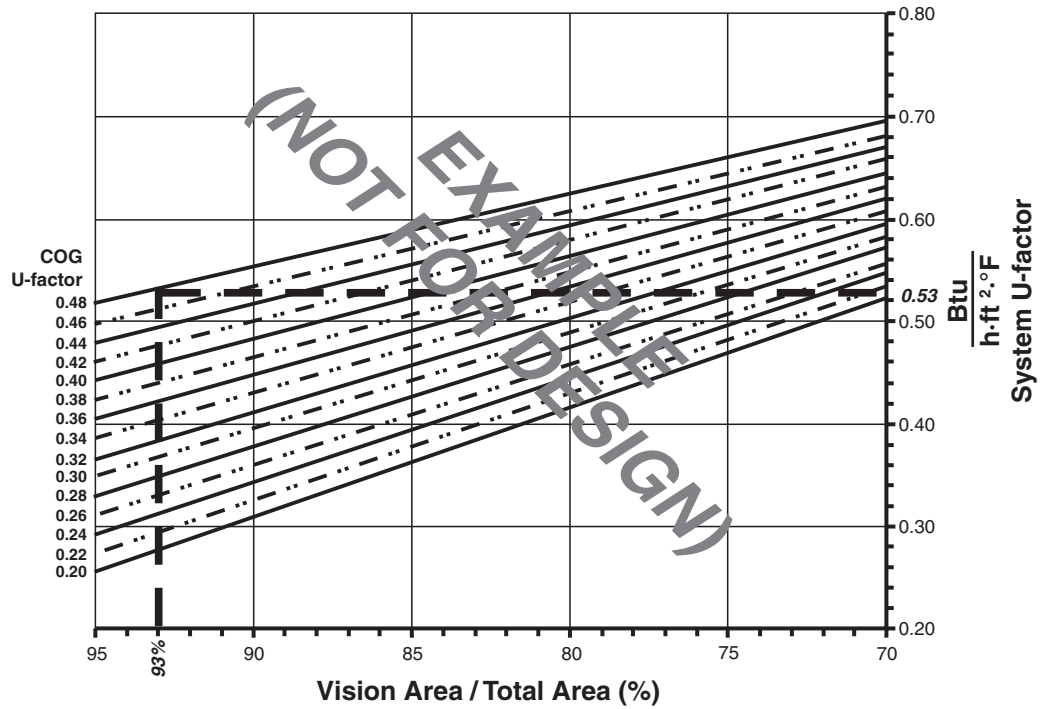
Laws and building and safety codes governing the design and use of glazed entrance, window, and curtain wall products vary widely. Kawneer does not control the selection of product configurations, operating hardware, or glazing materials, and assumes no responsibility therefor.

Kawneer reserves the right to change configuration without prior notice when deemed necessary for product improvement.

© Kawneer Company, Inc., 2013

Vision Area Chart

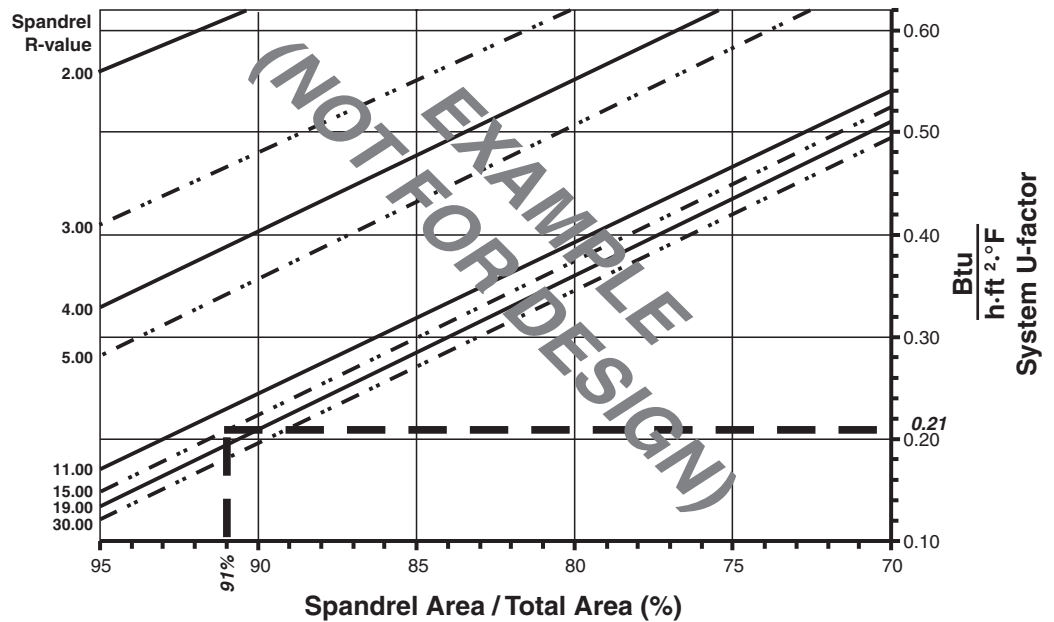
System U-factor vs Percent of Vision Area



Based on a single curtain wall bay of 93% vision glass and center of glass U-factor of 0.48, System U-factor is equal to 0.53 Btu/(h·ft²·°F)

Spandrel Area Chart

System U-factor vs Percent of Spandrel Area



Based on a single curtain wall bay of 91% spandrel and center of spandrel R-value of 15, system U-factor is equal to 0.21 Btu/(h·ft²·°F)

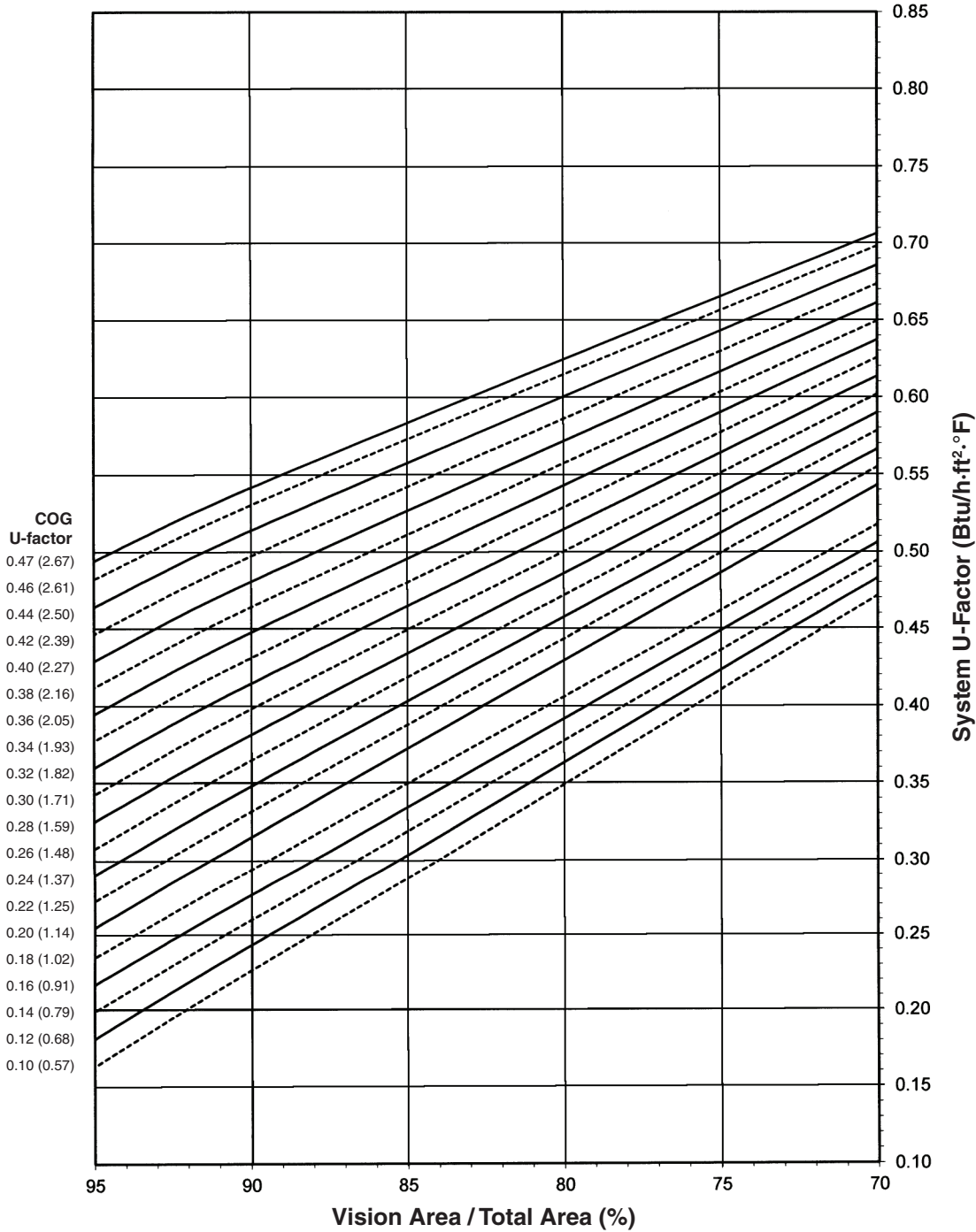
Laws and building and safety codes governing the design and use of glazed entrance, window, and curtain wall products vary widely. Kawneer does not control the selection of product configurations, operating hardware, or glazing materials, and assumes no responsibility therefor.

Kawneer reserves the right to change configuration without prior notice when deemed necessary for product improvement.
© Kawneer Company, Inc., 2013

Note:
 Values in parentheses are metric.
 COG=Center of Glass.
 Charts are generated per AAMA 507.

1" GLAZING WITH ALUMINUM PRESSURE PLATE

System U-Factor for Vision Glass



Notes for System U-Factor, SHGC and VT charts:

For glass values that are not listed, linear interpolation is permitted.
 Glass properties are based on center of glass values (winter conditions) and are obtained from your glass supplier.

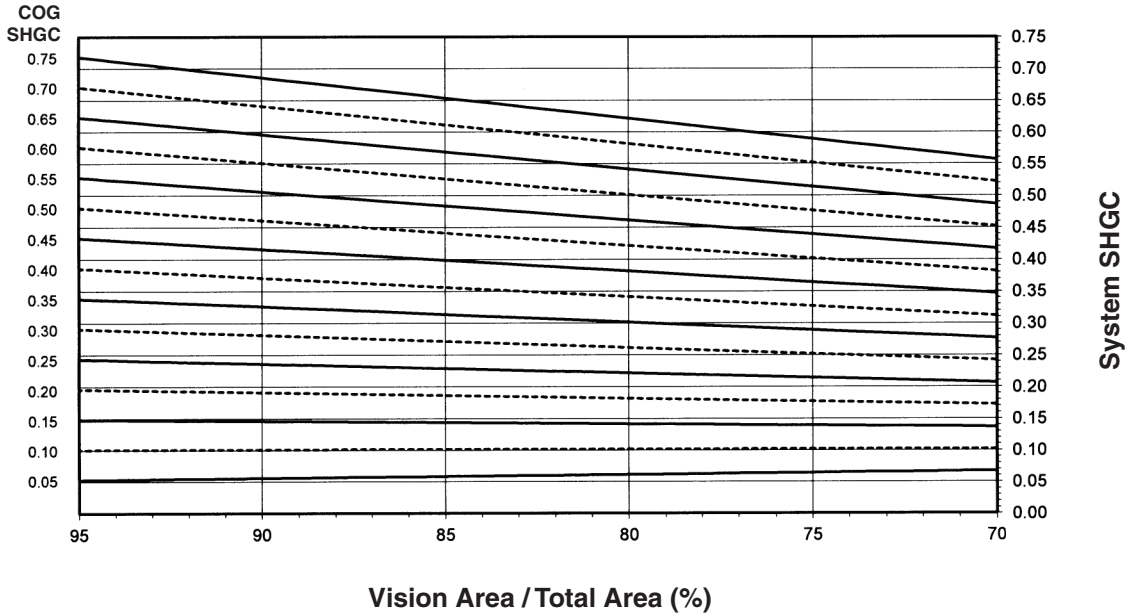
Laws and building and safety codes governing the design and use of glazed entrance, window, and curtain wall products vary widely. Kawneer does not control the selection of product configurations, operating hardware, or glazing materials, and assumes no responsibility therefor.

Kawneer reserves the right to change configuration without prior notice when deemed necessary for product improvement.

© Kawneer Company, Inc., 2013

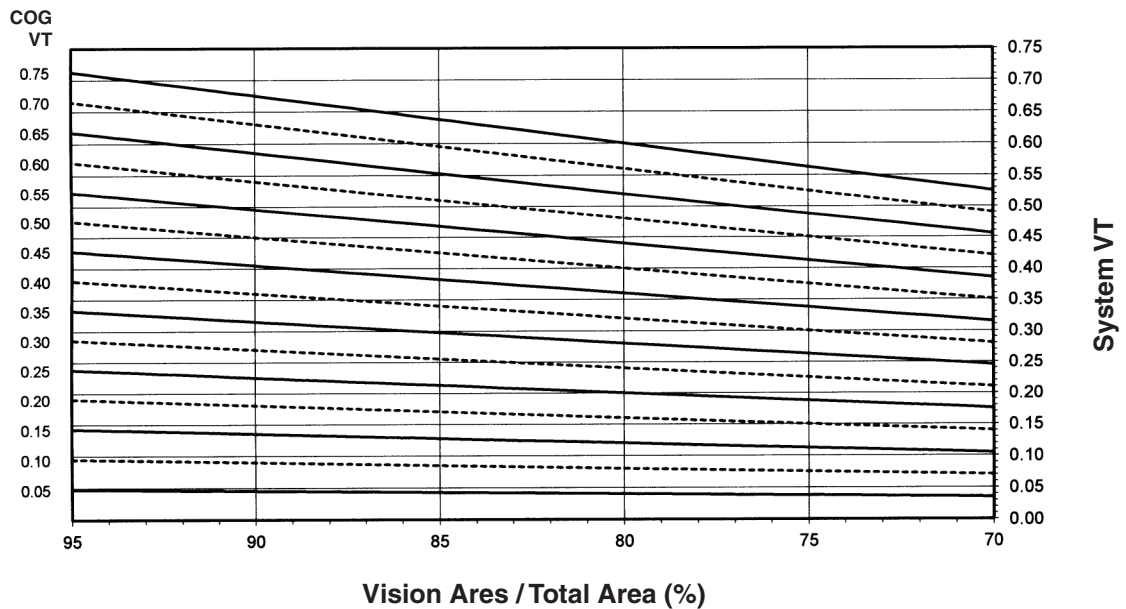
1" GLAZING WITH ALUMINUM PRESSURE PLATE

System Solar Heat Gain Coefficient (SHGC) vs Percent of Vision Area



Charts are generated per AAMA 507.

System Visible Transmittance (VT) vs Percent of Vision Area



Charts are generated per AAMA 507.

Laws and building and safety codes governing the design and use of glazed entrance, window, and curtain wall products vary widely. Kawneer does not control the selection of product configurations, operating hardware, or glazing materials, and assumes no responsibility therefor.

Kawneer reserves the right to change configuration without prior notice when deemed necessary for product improvement.
© Kawneer Company, Inc., 2013

Thermal Transmittance¹ (BTU/hr • ft² • °F)

Glass U-Factor ³	Overall U-Factor ⁴
0.47	0.54
0.46	0.53
0.44	0.52
0.42	0.50
0.40	0.48
0.38	0.47
0.36	0.45
0.34	0.43
0.32	0.42
0.30	0.40
0.28	0.38
0.26	0.37
0.24	0.35
0.22	0.33
0.20	0.32
0.18	0.30
0.16	0.28
0.14	0.26
0.12	0.25
0.10	0.23

**1" GLAZING WITH
ALUMINUM PRESSURE PLATE**

NOTE: For glass values that are not listed, linear interpolation is permitted.

1. U-Factors are determined in accordance with NFRC 100.
2. SHGC and VT values are determined in accordance with NFRC 200.
3. Glass properties are based on center of glass values and are obtained from your glass supplier.
4. Overall U-Factor, SHGC, and VT Matricies are based on the standard NFRC specimen size of 2000mm wide by 2000mm high (78-3/4" by 78-3/4").

SHGC Matrix²

Glass SHGC ³	Overall SHGC ⁴
0.75	0.68
0.70	0.64
0.65	0.59
0.60	0.55
0.55	0.50
0.50	0.46
0.45	0.41
0.40	0.37
0.35	0.32
0.30	0.28
0.25	0.24
0.20	0.19
0.15	0.15
0.10	0.10
0.05	0.06

Visible Transmittance²

Glass VT ³	Overall VT ⁴
0.75	0.67
0.70	0.63
0.65	0.58
0.60	0.54
0.55	0.49
0.50	0.45
0.45	0.40
0.40	0.36
0.35	0.31
0.30	0.27
0.25	0.22
0.20	0.18
0.15	0.13
0.10	0.09
0.05	0.04

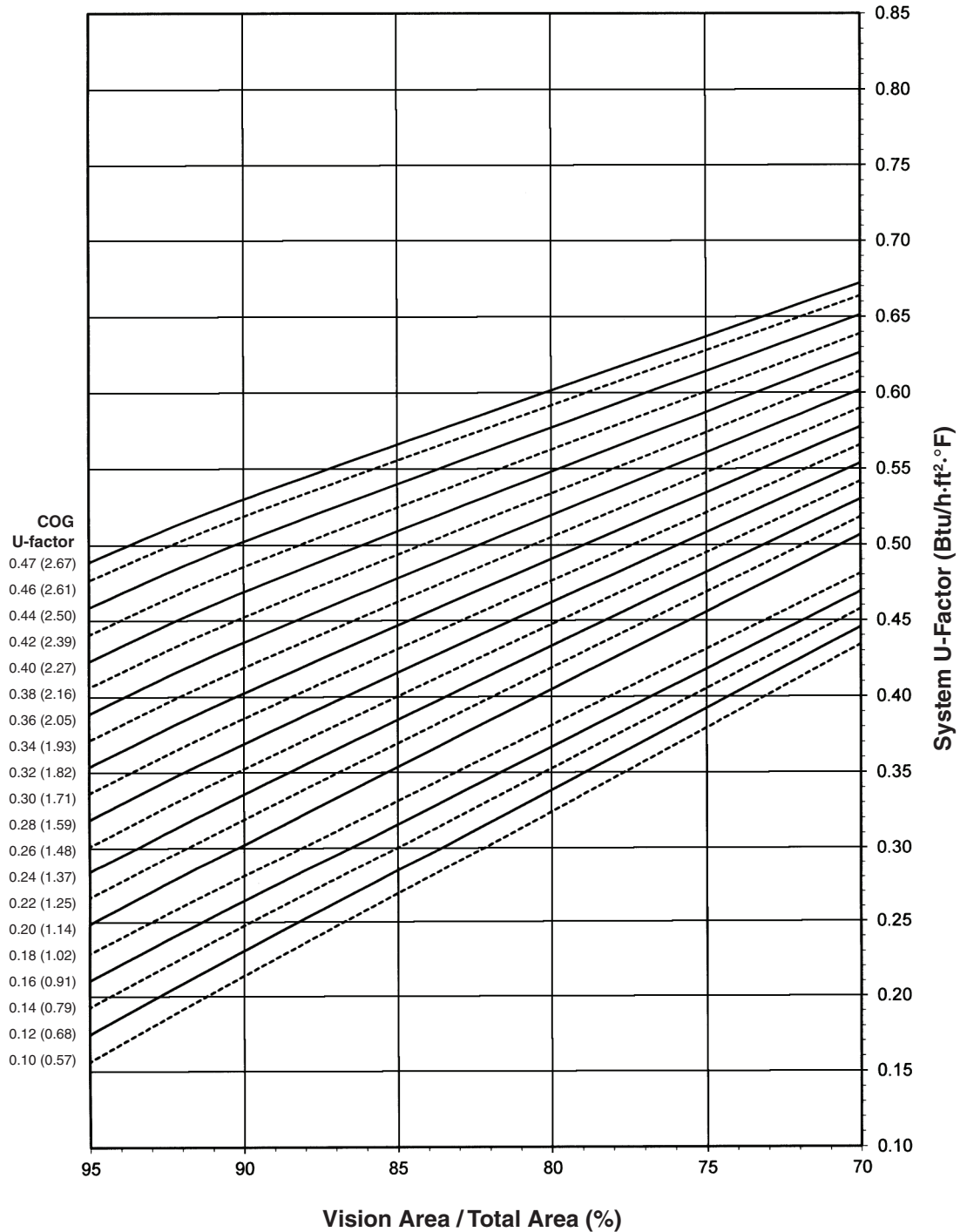
Laws and building and safety codes governing the design and use of glazed entrance, window, and curtain wall products vary widely. Kawneer does not control the selection of product configurations, operating hardware, or glazing materials, and assumes no responsibility therefor.

Kawneer reserves the right to change configuration without prior notice when deemed necessary for product improvement.
© Kawneer Company, Inc., 2013

Note:
 Values in parentheses are metric.
 COG=Center of Glass.
 Charts are generated per AAMA 507.

1" GLAZING WITH FIBERGLASS PRESSURE PLATE

System U-Factor for Vision Glass



Notes for System U-Factor, SHGC and VT charts:

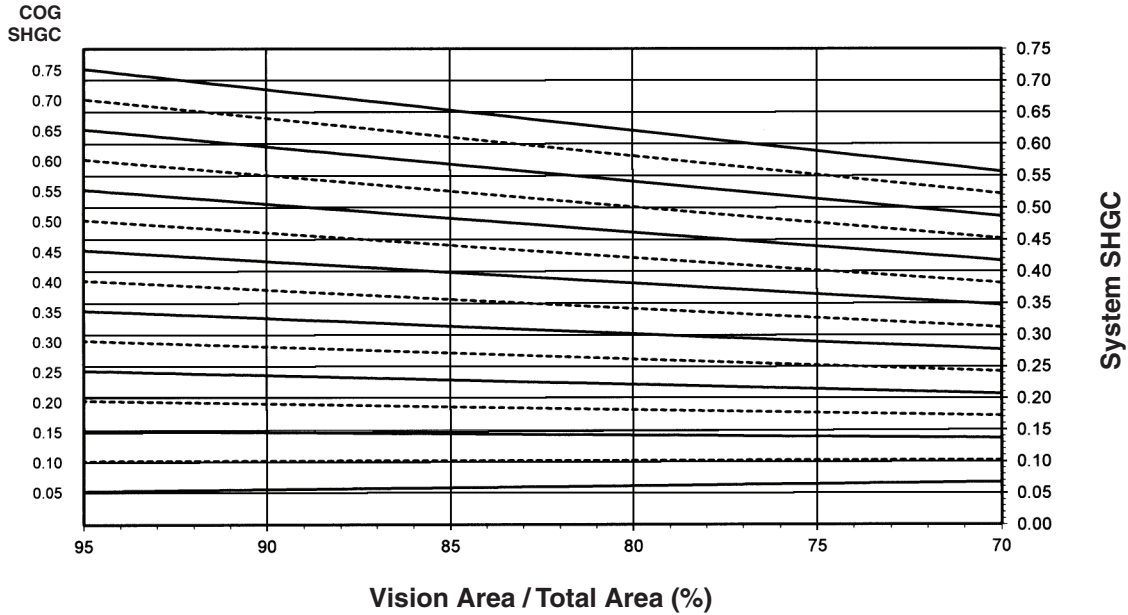
For glass values that are not listed, linear interpolation is permitted.
 Glass properties are based on center of glass values (winter conditions) and are obtained from your glass supplier.

Laws and building and safety codes governing the design and use of glazed entrance, window, and curtain wall products vary widely. Kawneer does not control the selection of product configurations, operating hardware, or glazing materials, and assumes no responsibility therefor.

Kawneer reserves the right to change configuration without prior notice when deemed necessary for product improvement.
 © Kawneer Company, Inc., 2013

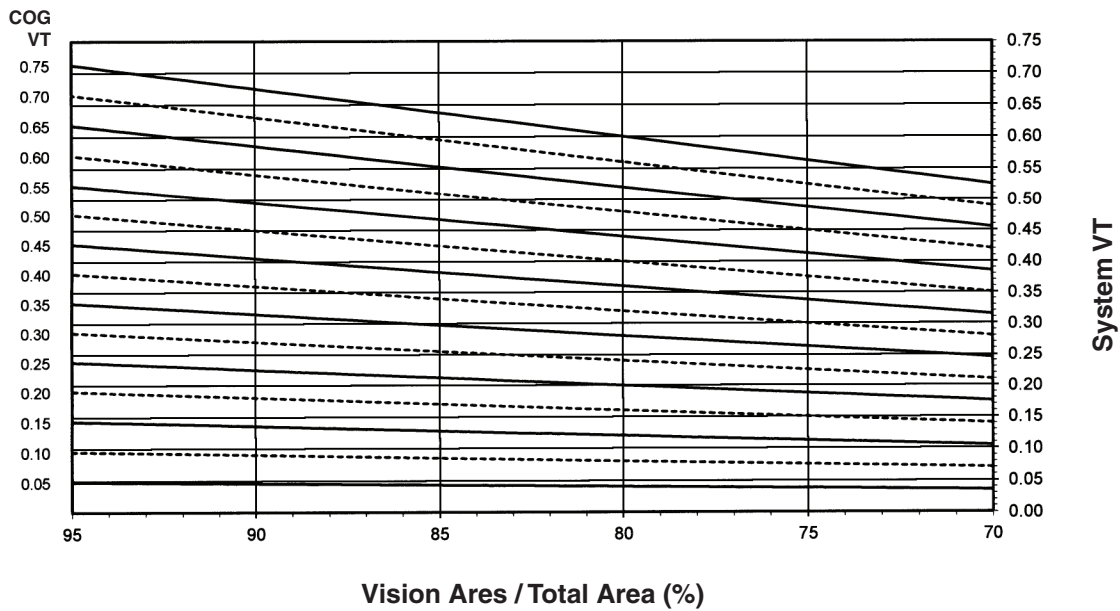
1" GLAZING WITH FIBERGLASS PRESSURE PLATE

System Solar Heat Gain Coefficient (SHGC) vs Percent of Vision Area



Charts are generated per AAMA 507.

System Visible Transmittance (VT) vs Percent of Vision Area



Charts are generated per AAMA 507.

Laws and building and safety codes governing the design and use of glazed entrance, window, and curtain wall products vary widely. Kawneer does not control the selection of product configurations, operating hardware, or glazing materials, and assumes no responsibility therefor.

Kawneer reserves the right to change configuration without prior notice when deemed necessary for product improvement.
© Kawneer Company, Inc., 2013

Thermal Transmittance ¹ (BTU/hr • ft ² • °F)

Glass U-Factor ³	Overall U-Factor ⁴
0.47	0.53
0.46	0.52
0.44	0.50
0.42	0.49
0.40	0.47
0.38	0.45
0.36	0.44
0.34	0.42
0.32	0.40
0.30	0.39
0.28	0.37
0.26	0.35
0.24	0.34
0.22	0.32
0.20	0.31
0.18	0.28
0.16	0.27
0.14	0.25
0.12	0.23
0.10	0.22

1" GLAZING WITH FIBERGLASS PRESSURE PLATE

NOTE: For glass values that are not listed, linear interpolation is permitted.

1. U-Factors are determined in accordance with NFRC 100.
2. SHGC and VT values are determined in accordance with NFRC 200.
3. Glass properties are based on center of glass values and are obtained from your glass supplier.
4. Overall U-Factor, SHGC, and VT Matrices are based on the standard NFRC specimen size of 2000mm wide by 2000mm high (78-3/4" by 78-3/4").

SHGC Matrix ²

Glass SHGC ³	Overall SHGC ⁴
0.75	0.68
0.70	0.64
0.65	0.59
0.60	0.55
0.55	0.50
0.50	0.46
0.45	0.41
0.40	0.37
0.35	0.32
0.30	0.28
0.25	0.24
0.20	0.19
0.15	0.15
0.10	0.10
0.05	0.06

Visible Transmittance ²

Glass VT ³	Overall VT ⁴
0.75	0.67
0.70	0.63
0.65	0.58
0.60	0.54
0.55	0.49
0.50	0.45
0.45	0.40
0.40	0.36
0.35	0.31
0.30	0.27
0.25	0.22
0.20	0.18
0.15	0.13
0.10	0.09
0.05	0.04

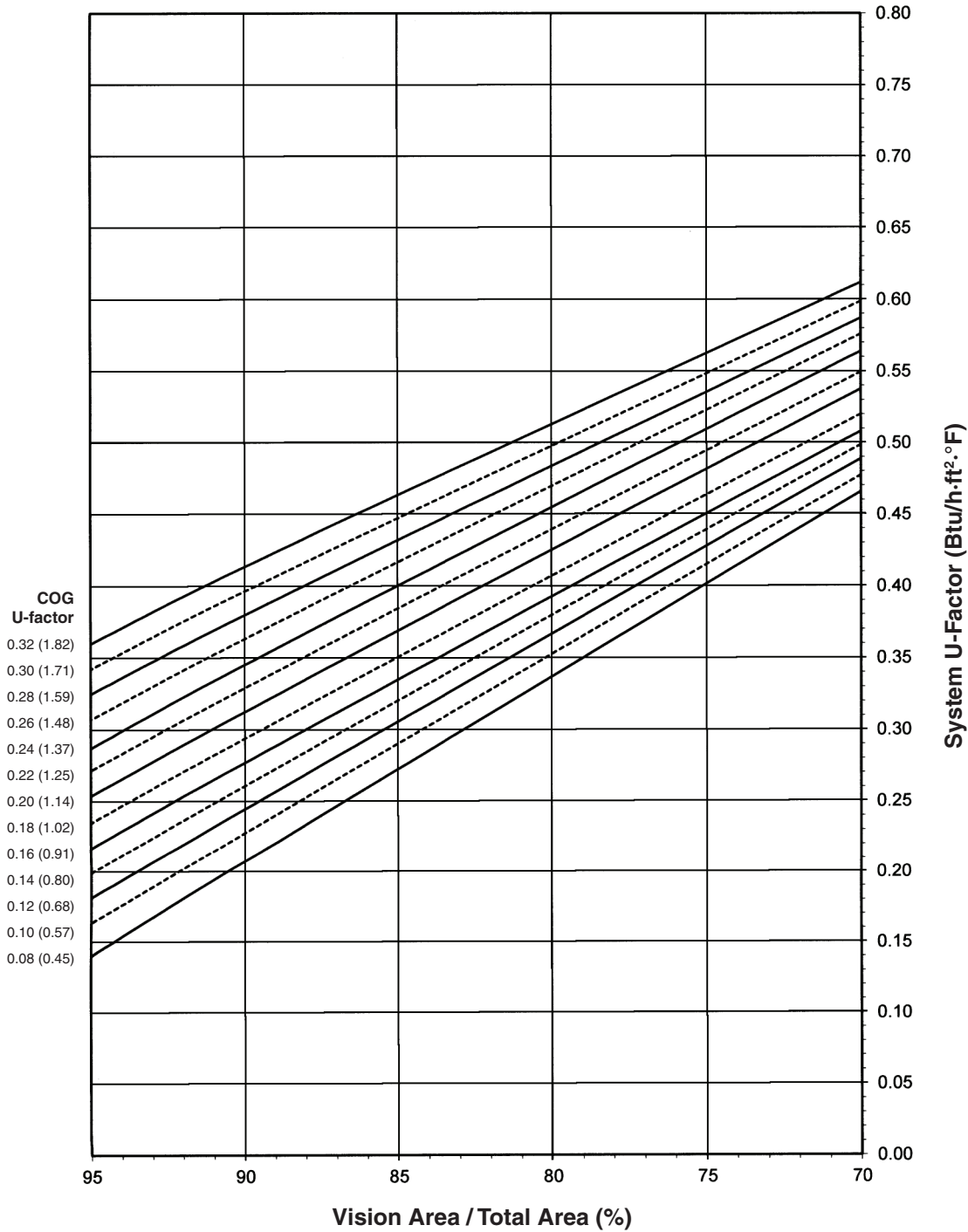
Laws and building and safety codes governing the design and use of glazed entrance, window, and curtain wall products vary widely. Kawneer does not control the selection of product configurations, operating hardware, or glazing materials, and assumes no responsibility therefor.

Kawneer reserves the right to change configuration without prior notice when deemed necessary for product improvement.
© Kawneer Company, Inc., 2013

Note:
 Values in parentheses are metric.
 COG=Center of Glass.
 Charts are generated per AAMA 507.

1-3/4" GLAZING WITH ALUMINUM PRESSURE PLATE

System U-Factor for Vision Glass



Notes for System U-Factor, SHGC and VT charts:

For glass values that are not listed, linear interpolation is permitted.
 Glass properties are based on center of glass values (winter conditions) and are obtained from your glass supplier.

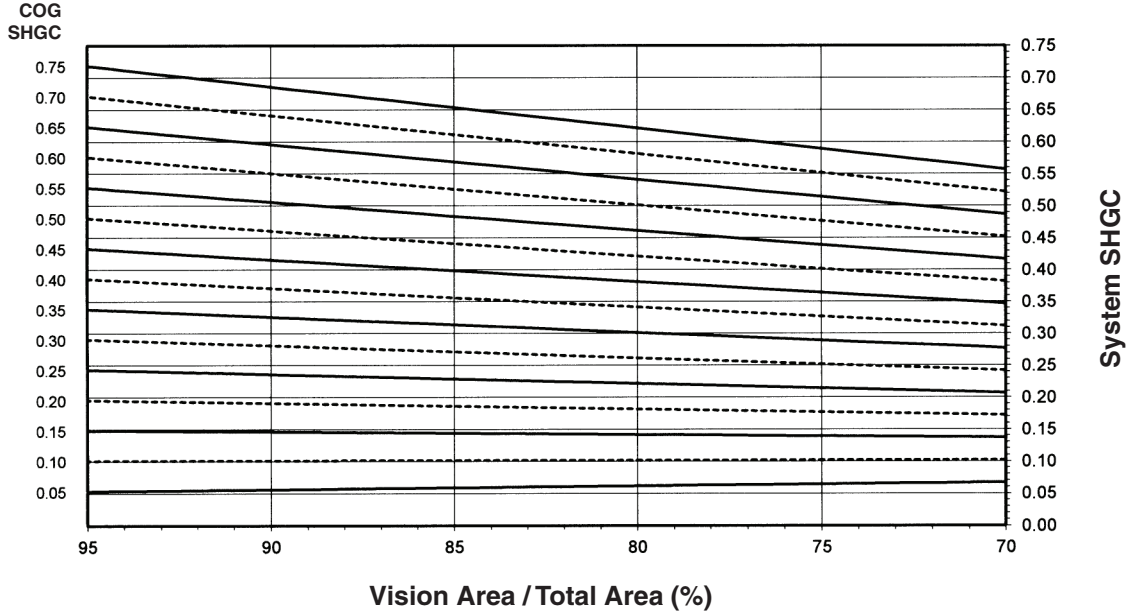
Laws and building and safety codes governing the design and use of glazed entrance, window, and curtain wall products vary widely. Kawneer does not control the selection of product configurations, operating hardware, or glazing materials, and assumes no responsibility therefor.

Kawneer reserves the right to change configuration without prior notice when deemed necessary for product improvement.

© Kawneer Company, Inc., 2013

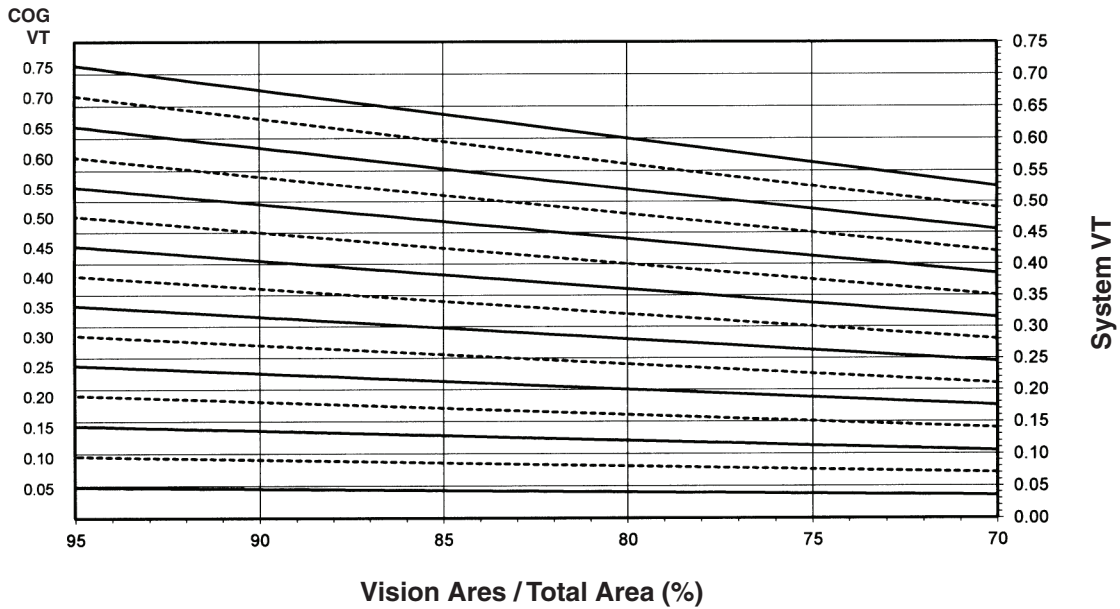
1-3/4" GLAZING WITH ALUMINUM PRESSURE PLATE

System Solar Heat Gain Coefficient (SHGC) vs Percent of Vision Area



Charts are generated per AAMA 507.

System Visible Transmittance (VT) vs Percent of Vision Area



Charts are generated per AAMA 507.

Laws and building and safety codes governing the design and use of glazed entrance, window, and curtain wall products vary widely. Kawneer does not control the selection of product configurations, operating hardware, or glazing materials, and assumes no responsibility therefor.

Kawneer reserves the right to change configuration without prior notice when deemed necessary for product improvement.
 © Kawneer Company, Inc., 2013

Thermal Transmittance¹ (BTU/hr • ft² • °F)

Glass U-Factor ³	Overall U-Factor ⁴
0.32	0.42
0.30	0.40
0.28	0.38
0.26	0.37
0.24	0.35
0.22	0.33
0.20	0.32
0.18	0.30
0.16	0.28
0.14	0.26
0.12	0.25
0.10	0.23
0.08	0.21

**1-3/4" GLAZING WITH
ALUMINUM PRESSURE PLATE**

NOTE: For glass values that are not listed, linear interpolation is permitted.

1. U-Factors are determined in accordance with NFRC 100.
2. SHGC and VT values are determined in accordance with NFRC 200.
3. Glass properties are based on center of glass values and are obtained from your glass supplier.
4. Overall U-Factor, SHGC, and VT Matricies are based on the standard NFRC specimen size of 2000mm wide by 2000mm high (78-3/4" by 78-3/4").

SHGC Matrix²

Glass SHGC ³	Overall SHGC ⁴
0.75	0.68
0.70	0.64
0.65	0.59
0.60	0.55
0.55	0.50
0.50	0.46
0.45	0.41
0.40	0.37
0.35	0.32
0.30	0.28
0.25	0.24
0.20	0.19
0.15	0.15
0.10	0.10
0.05	0.06

Visible Transmittance²

Glass VT ³	Overall VT ⁴
0.75	0.67
0.70	0.63
0.65	0.58
0.60	0.54
0.55	0.49
0.50	0.45
0.45	0.40
0.40	0.36
0.35	0.31
0.30	0.27
0.25	0.22
0.20	0.18
0.15	0.13
0.10	0.09
0.05	0.04

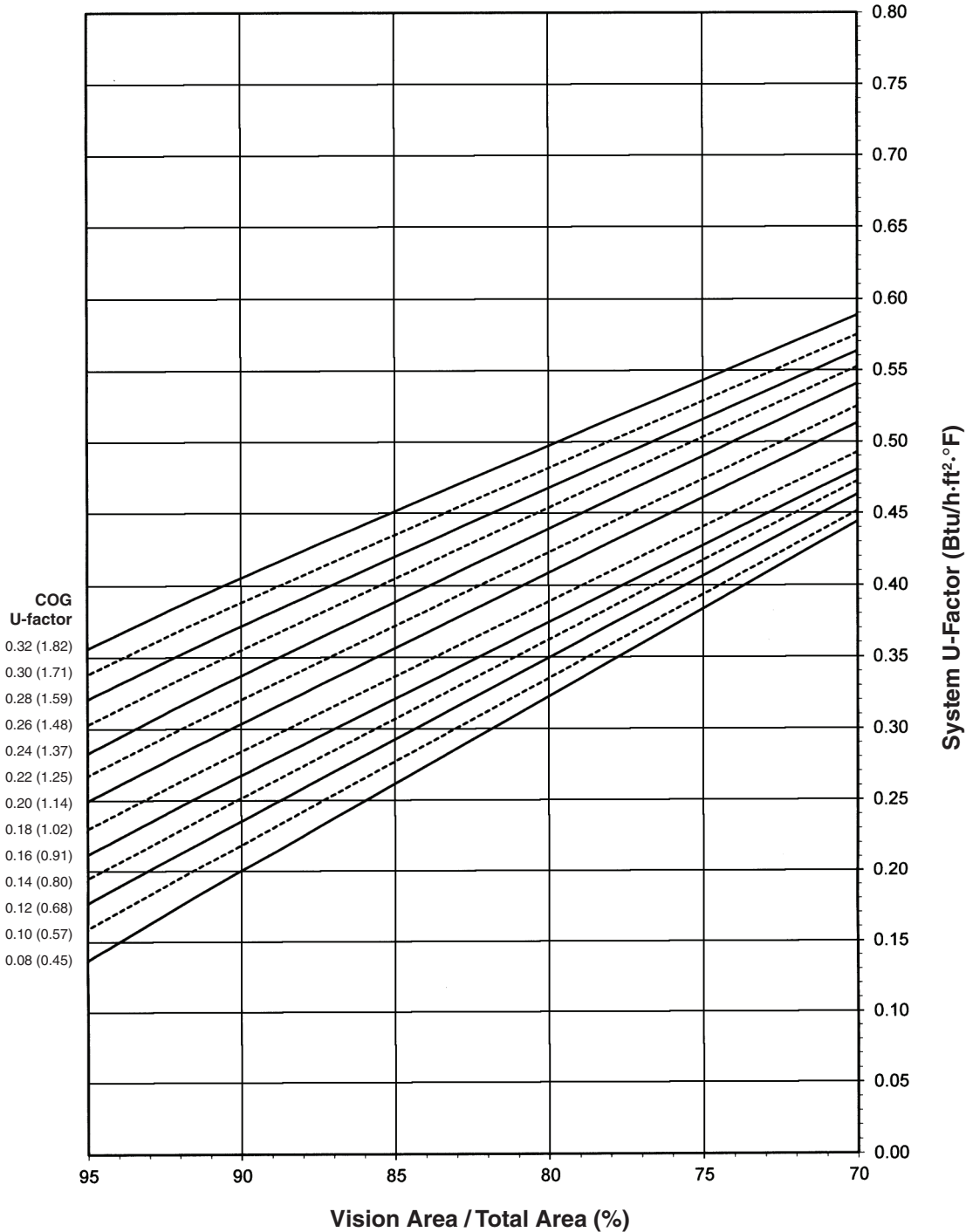
Laws and building and safety codes governing the design and use of glazed entrance, window, and curtain wall products vary widely. Kawneer does not control the selection of product configurations, operating hardware, or glazing materials, and assumes no responsibility therefor.

Kawneer reserves the right to change configuration without prior notice when deemed necessary for product improvement.
© Kawneer Company, Inc., 2013

Note:
 Values in parentheses are metric.
 COG=Center of Glass.
 Charts are generated per AAMA 507.

1-3/4" GLAZING WITH FIBERGLASS PRESSURE PLATE

System U-Factor for Vision Glass



Notes for System U-Factor, SHGC and VT charts:

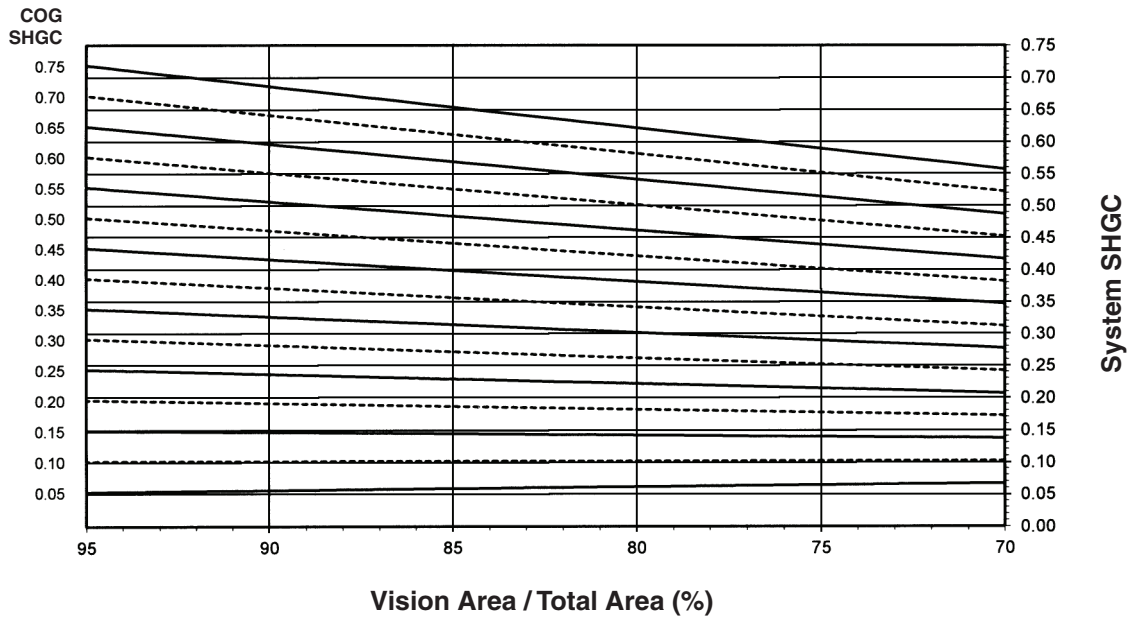
For glass values that are not listed, linear interpolation is permitted.
 Glass properties are based on center of glass values (winter conditions) and are obtained from your glass supplier.

Laws and building and safety codes governing the design and use of glazed entrance, window, and curtain wall products vary widely. Kawneer does not control the selection of product configurations, operating hardware, or glazing materials, and assumes no responsibility therefor.

Kawneer reserves the right to change configuration without prior notice when deemed necessary for product improvement.
 © Kawneer Company, Inc., 2013

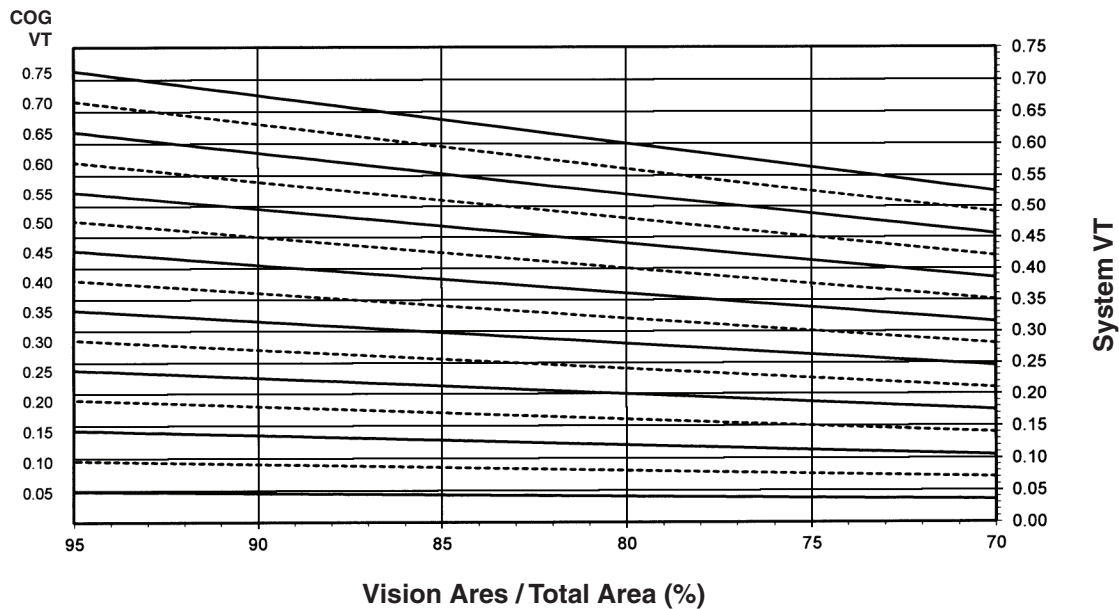
1-3/4" GLAZING WITH FIBERGLASS PRESSURE PLATE

System Solar Heat Gain Coefficient (SHGC) vs Percent of Vision Area



Charts are generated per AAMA 507.

System Visible Transmittance (VT) vs Percent of Vision Area



Charts are generated per AAMA 507.

Laws and building and safety codes governing the design and use of glazed entrance, window, and curtain wall products vary widely. Kawneer does not control the selection of product configurations, operating hardware, or glazing materials, and assumes no responsibility therefor.

Kawneer reserves the right to change configuration without prior notice when deemed necessary for product improvement.
© Kawneer Company, Inc., 2013

Thermal Transmittance ¹ (BTU/hr • ft ² • °F)

Glass U-Factor ³	Overall U-Factor ⁴
0.32	0.41
0.30	0.39
0.28	0.37
0.26	0.36
0.24	0.34
0.22	0.32
0.20	0.31
0.18	0.29
0.16	0.27
0.14	0.25
0.12	0.24
0.10	0.22
0.08	0.20

1-3/4" GLAZING WITH FIBERGLASS PRESSURE PLATE

NOTE: For glass values that are not listed, linear interpolation is permitted.

1. U-Factors are determined in accordance with NFRC 100.
2. SHGC and VT values are determined in accordance with NFRC 200.
3. Glass properties are based on center of glass values and are obtained from your glass supplier.
4. Overall U-Factor, SHGC, and VT Matrices are based on the standard NFRC specimen size of 2000mm wide by 2000mm high (78-3/4" by 78-3/4").

SHGC Matrix ²

Glass SHGC ³	Overall SHGC ⁴
0.75	0.68
0.70	0.64
0.65	0.59
0.60	0.55
0.55	0.50
0.50	0.46
0.45	0.41
0.40	0.37
0.35	0.32
0.30	0.28
0.25	0.24
0.20	0.19
0.15	0.15
0.10	0.10
0.05	0.06

Visible Transmittance ²

Glass VT ³	Overall VT ⁴
0.75	0.67
0.70	0.63
0.65	0.58
0.60	0.54
0.55	0.49
0.50	0.45
0.45	0.40
0.40	0.36
0.35	0.31
0.30	0.27
0.25	0.22
0.20	0.18
0.15	0.13
0.10	0.09
0.05	0.04

Laws and building and safety codes governing the design and use of glazed entrance, window, and curtain wall products vary widely. Kawneer does not control the selection of product configurations, operating hardware, or glazing materials, and assumes no responsibility therefor.

Kawneer reserves the right to change configuration without prior notice when deemed necessary for product improvement.
© Kawneer Company, Inc., 2013

CONDENSATION RESISTANCE

	PRESSURE PLATE TYPE	CRF		I-VALUE	
		FRAME	GLASS	FRAME	GLASS
1" DOUBLE GLAZING INFILL	ALUMINUM FIBERGLASS	79	76	71 76	67 68
1-3/4" TRIPLE GLAZING INFILL	ALUMINUM FIBERGLASS	82	81	74 76	77 78

Laws and building and safety codes governing the design and use of glazed entrance, window, and curtain wall products vary widely. Kawneer does not control the selection of product configurations, operating hardware, or glazing materials, and assumes no responsibility therefor.

Kawneer reserves the right to change configuration without prior notice when deemed necessary for product improvement.
© Kawneer Company, Inc., 2013